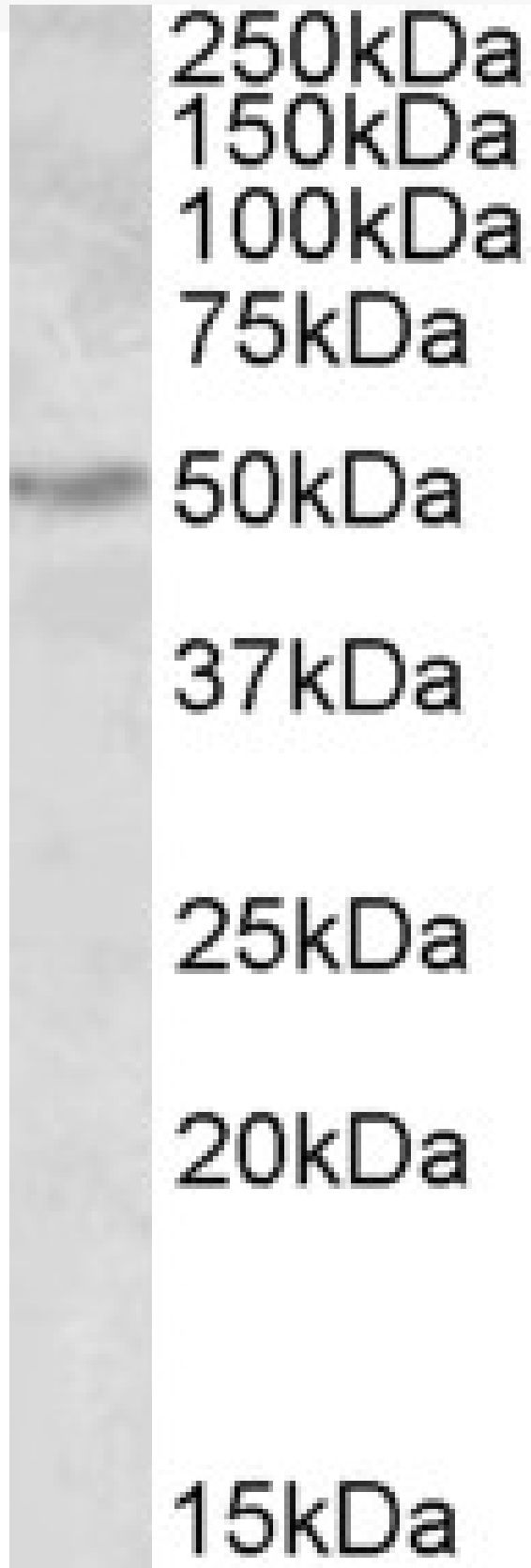


GOAT ANTI-ALDH9A1 ANTIBODY

SKU: EB10130



SPECIFICATIONS

Formulation	Supplied at 0.5 mg/ml in Tris saline, 0.02% sodium azide, pH7.3 with 0.5% bovine serum albumin.
Unit Size	100 µg
Storage Instructions	Aliquot and store at -20°C. Minimize freezing and thawing.
Synonym / Alias Names	ALDH9A1 TMABADH R-aminobutyraldehyde dehydrogenase E3 ALDH9 ALDH7 ALDH4 aldehyde dehydrogenase E3 is aldehyde dehydrogenase 9A1 aldehyde dehydrogenase 9 family, member A1 aldehyde dehydrogenase (NAD+) 4-trimethylaminobutyraldehyde dehydrogenase
Accession ID	NP_000687.3
Blocking Peptide	EBP10130
Immunogen	Peptide with sequence C-QKEILDKFTEEVVKQ, from the internal region of the protein sequence according to NP_000687.3.
Peptide Sequence	C-QKEILDKFTEEVVKQ
Purification Method	Purified from goat serum by ammonium sulphate precipitation followed by antigen affinity chromatography using the immunizing peptide.
Shipping Instructions	Refrigerated
Predicted Species	Human, Cow
Reactive Species	Human
Human Gene ID	223
Product Grade	https://prod-vector-labs-pimcore-assets.s3.us-east-1.amazonaws.com/assets/products/image/elite_medium.png
IHC Results	In paraffin embedded Human Cerebellum shows staining of a few cells between the Granular Cell layer and the Molecular Layer of the Cerebellum. Please note the unstained Purkinje cell at 10 O'clock. Recommended concentration, 3-5µg/ml.
ELISA Detection Limit	Antibody detection limit dilution 1:16000.
Western Blot	Approx 50kDa band observed in Human Kidney and Liver lysates (calculated MW of 56.3kDa according to NP_000687.3). Recommended concentration: 0.3-1µg/ml.
Application Type	Pep-ELISA, WB, IHC

DOCUMENTS

- [Data Sheet](#)

GALLERY IMAGES

