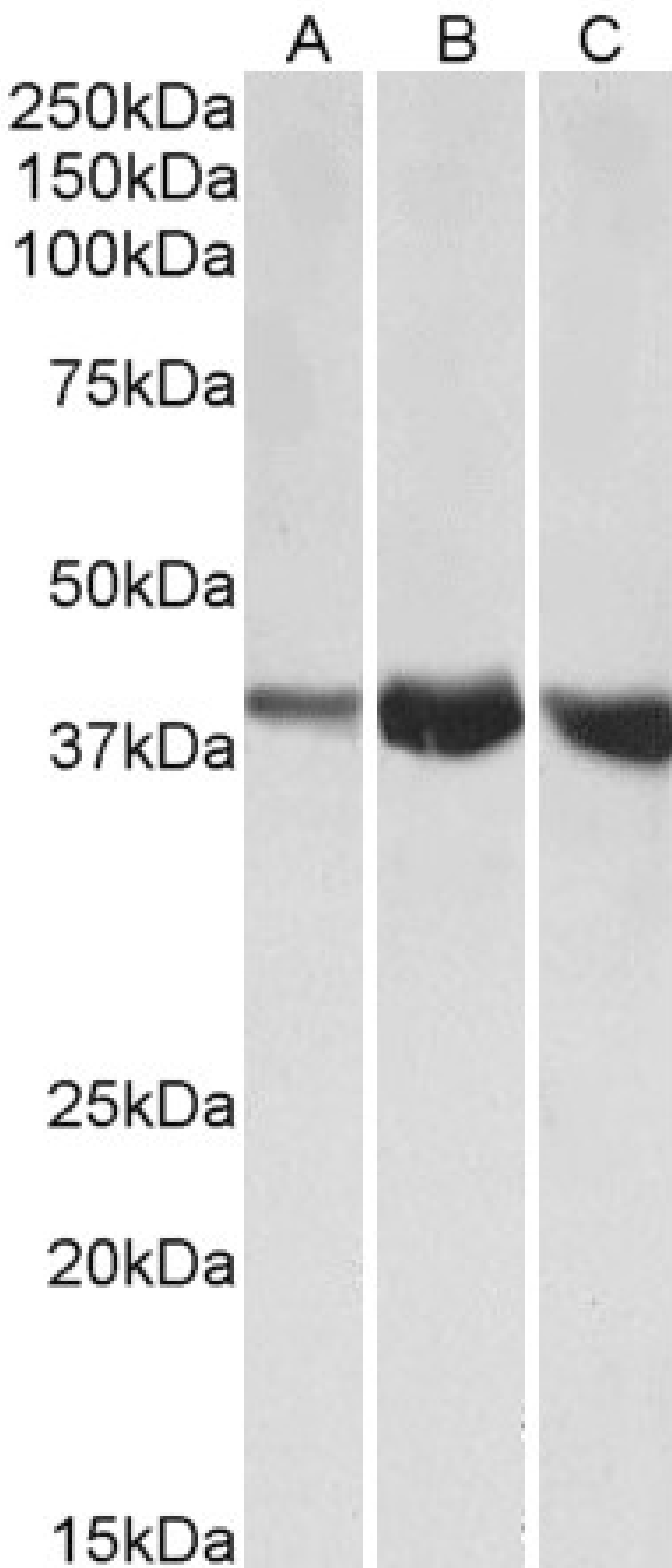


GOAT ANTI-ALDOA ANTIBODY

SKU: EB12391



SPECIFICATIONS

Formulation	Supplied at 0.5 mg/ml in Tris saline, 0.02% sodium azide, pH7.3 with 0.5% bovine serum albumin.
Unit Size	100 µg
Storage	
Instructions	Aliquot and store at -20°C. Minimize freezing and thawing.
Synonym / Alias Names	ALDOA aldolase A, fructose-bisphosphate ALDA GSD12 fructose-1, 6-bisphosphate triosephosphate-lyase fructose-bisphosphate aldolase A lung cancer antigen NY-LU-1 muscle-type aldolase
Accession ID	NP_000025.1; NP_001230106.1
Blocking Peptide	EBP12391
Immunogen	Peptide with sequence NSLACQGKYTPSGQ, from the internal region (near N terminus) of the protein sequence according to NP_000025.1; NP_001230106.1.
Product Comments	This antibody is expected to recognize both reported isoforms (P_000025.1; NP_001230106.1). Reported variants represent identical protein: NP_908930.1, NP_908932.1, NP_001121089.1, NP_000025.1.
Peptide Sequence	NSLACQGKYTPSGQ
Purification Method	Purified from goat serum by ammonium sulphate precipitation followed by antigen affinity chromatography using the immunizing peptide.
Shipping Instructions	Refrigerated
Predicted Species	Human, Mouse, Rat, Dog, Cow
Reactive Species	Human, Mouse, Rat
Human Gene ID	226
Mouse Gene ID	11674
Rat Gene ID	24189
Product Grade	https://prod-vector-labs-pimcore-assets.s3.us-east-1.amazonaws.com/assets/products/image/elite_medium.png
ELISA Detection Limit	Antibody detection limit dilution 1:32000.
Western Blot	Approx 38kDa band observed in Human, Mouse and Rat Skeletal Muscle lysates (calculated MW of 39.4kDa according to NP_000025.1). Recommended concentration: 1-3µg/ml.
Application Type	Pep-ELISA, WB

DOCUMENTS

- [Data Sheet](#)

GALLERY IMAGES

