



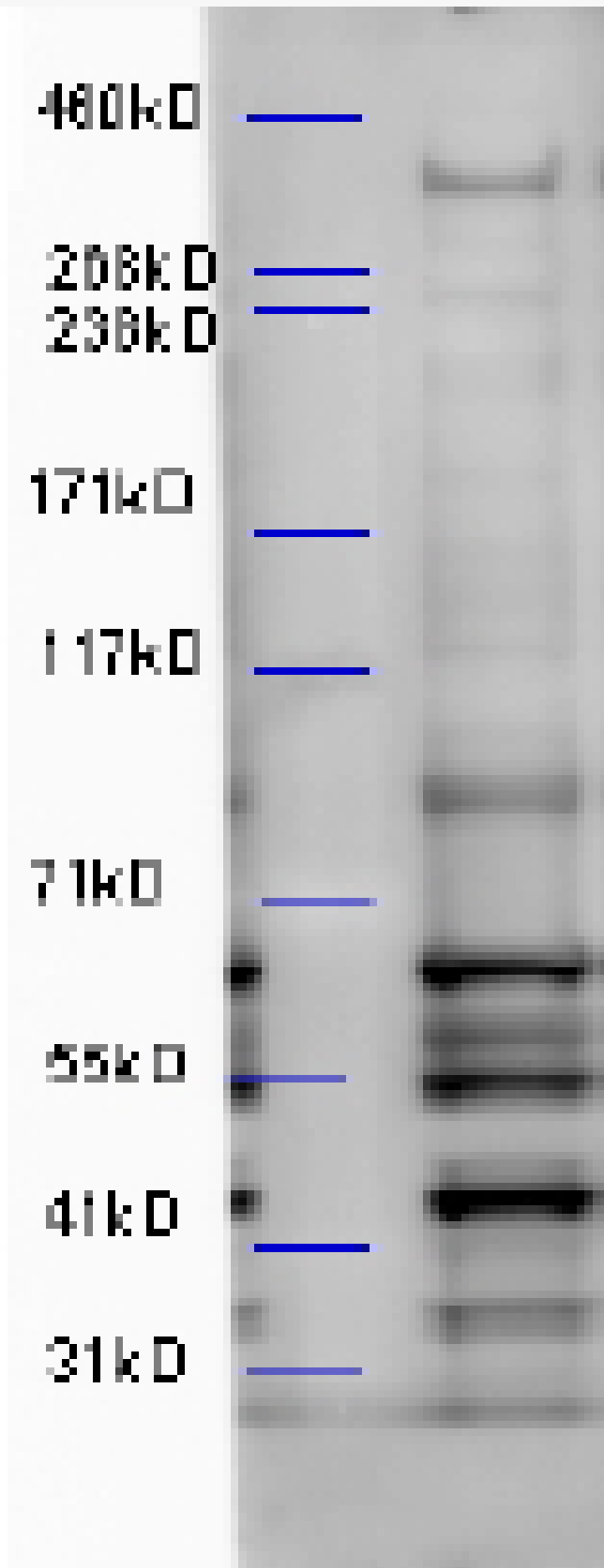
www.everestbiotech.com

Email: customerservice@vectorlabs.com

Telephone: [\(650\) 697-3600](tel:(650)697-3600)

GOAT ANTI-ALFY / WDFY3 ANTIBODY

SKU: EB12545





SPECIFICATIONS

Formulation	Supplied at 0.5 mg/ml in Tris saline, 0.02% sodium azide, pH7.3 with 0.5% bovine serum albumin.
Unit Size	100 µg
Storage Instructions	Aliquot and store at -20°C. Minimize freezing and thawing.
Synonym / Alias Names	WDFY3 WD repeat and FYVE domain containing 3 ALFY ZFYVE25 WD repeat and FYVE domain-containing protein 3 autophagy-linked FYVE protein
Accession ID	NP_055806.2
Blocking Peptide	EBP12545
Immunogen	Peptide with sequence C-SPERSTRTQQKEFQT, from the internal region of the protein sequence according to NP_055806.2.
Peptide Sequence	C-SPERSTRTQQKEFQT
Purification Method	Purified from goat serum by ammonium sulphate precipitation followed by antigen affinity chromatography using the immunizing peptide.
Shipping Instructions	Refrigerated
Predicted Species	Human, Mouse, Rat, Cow
Reactive Species	Mouse
Human Gene ID	23001
Mouse Gene ID	72145
Rat Gene ID	305164
Product Grade	https://prod-vector-labs-pimcore-assets.s3.us-east-1.amazonaws.com/assets/products/image/elite_medium.png
ELISA Detection Limit	Antibody detection limit dilution 1:128000.
Western Blot	Approx 400kDa band observed in Mouse Brain lysates (calculated MW of 395kDa according to NP_055806.2). Data obtained from anonymous customer. The lower molecular weight bands are non-specific. We call for caution when used for other assays than Western blot. Recommended concentration: 4-6µg/ml.
Application Type	Pep-ELISA, WB



DOCUMENTS

- [Data Sheet](#)

GALLERY IMAGES

