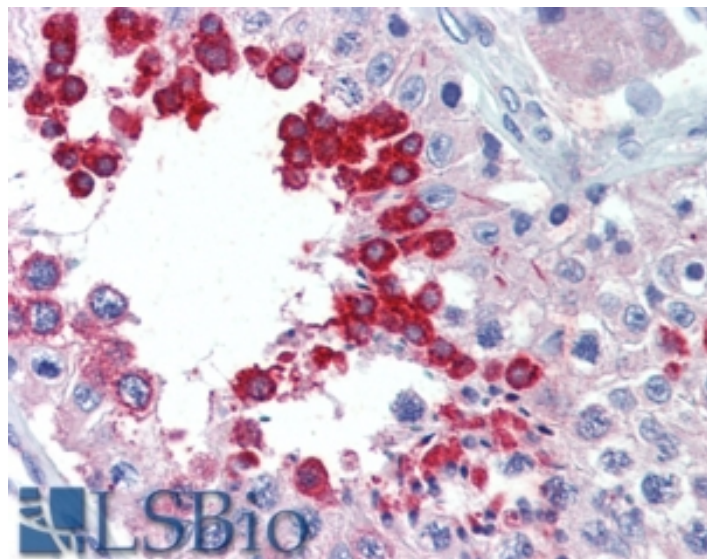


# GOAT ANTI-ALK ANTIBODY

**SKU:** EB09338



## SPECIFICATIONS

**Formulation** Supplied at 0.5 mg/ml in Tris saline, 0.02% sodium azide, pH7.3 with 0.5% bovine serum albumin.

**Unit Size** 100 µg

**Storage Instructions** Aliquot and store at -20°C. Minimize freezing and thawing.

**Synonym / Alias Names** anaplastic lymphoma kinase Ki-1|anaplastic lymphoma kinase (Ki-1)|CD246 antigen|ALK tyrosine kinase receptor|TFG/ALK|Ki-1|CD246|anaplastic lymphoma receptor tyrosine kinase|ALK

**Accession ID** NP\_004295.2

**Blocking Peptide** EBP09338

**Immunogen** Peptide with sequence C-PTKKNPIAKKEPH, from the internal region of the protein sequence according to NP\_004295.2.

**Peptide Sequence** C-PTKKNPIAKKEPH

**Purification Method** Purified from goat serum by ammonium sulphate precipitation followed by antigen affinity chromatography using the immunizing peptide.

**Shipping Instructions** Refrigerated

<b>Predicted Species</b>	Human, Dog, Cow
<b>Reactive Species</b>	Human
<b>Human Gene ID</b>	238
<b>Product Grade</b>	<a href="https://prod-vector-labs-pimcore-assets.s3.us-east-1.amazonaws.com/assets/products/image/elite_medium.png">https://prod-vector-labs-pimcore-assets.s3.us-east-1.amazonaws.com/assets/products/image/elite_medium.png</a>
<b>IHC Results</b>	In paraffin embedded Human Testis shows strong cytoplasm staining of primary spermatocytes. Recommended concentration, 5-15µg/ml.
<b>ELISA</b>	
<b>Detection Limit</b>	Antibody detection limit dilution 1:32000.
<b>Application Type</b>	Pep-ELISA, IHC

## DOCUMENTS

- [Data Sheet](#)

## GALLERY IMAGES

