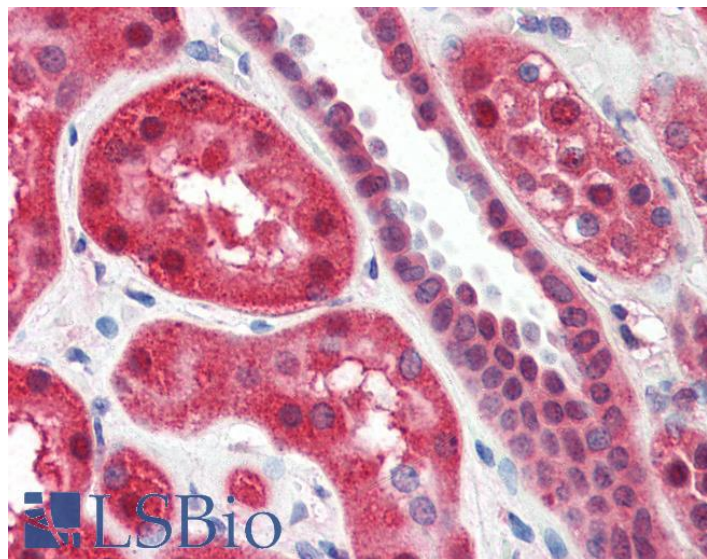


GOAT ANTI-ALOX15 ANTIBODY

SKU: EB09049



SPECIFICATIONS

Formulation Supplied at 0.5 mg/ml in Tris saline, 0.02% sodium azide, pH7.3 with 0.5% bovine serum albumin.

Unit Size 100 µg

Storage Instructions Aliquot and store at -20°C. Minimize freezing and thawing.

Synonym /

Alias ALOX15|arachidonate 15-lipoxygenase|15-LOX-1|15-LOX2

Names

Accession ID NP_001131.3

Blocking Peptide EBP09049

Immunogen Peptide with sequence C-HYKTDVAVKDDPE, from the internal region of the protein sequence according to NP_001131.3.

Peptide Sequence C-HYKTDVAVKDDPE

Purification Method Purified from goat serum by ammonium sulphate precipitation followed by antigen affinity chromatography using the immunizing peptide.

Shipping Instructions Refrigerated

Predicted Species	Human
Reactive Species	Human
Human Gene ID	246
Product Grade	https://prod-vector-labs-pimcore-assets.s3.us-east-1.amazonaws.com/assets/products/image/elite_medium.png
IHC Results	Paraffin embedded Human Skeletal Muscle and Kidney. Recommended concentration: 2µg/ml.
ELISA	
Detection Limit	Antibody detection limit dilution 1:32000.
Western Blot	Approx. 80kDa band observed in nuclear lysates of cell line HeLa (calculated MW of 74.8kDa according to NP_001131.3). Recommended concentration: 0.2-0.5µg/ml. Primary incubation was 1 hour.
Application Type	Pep-ELISA, WB, IHC

DOCUMENTS

- [Data Sheet](#)

GALLERY IMAGES

