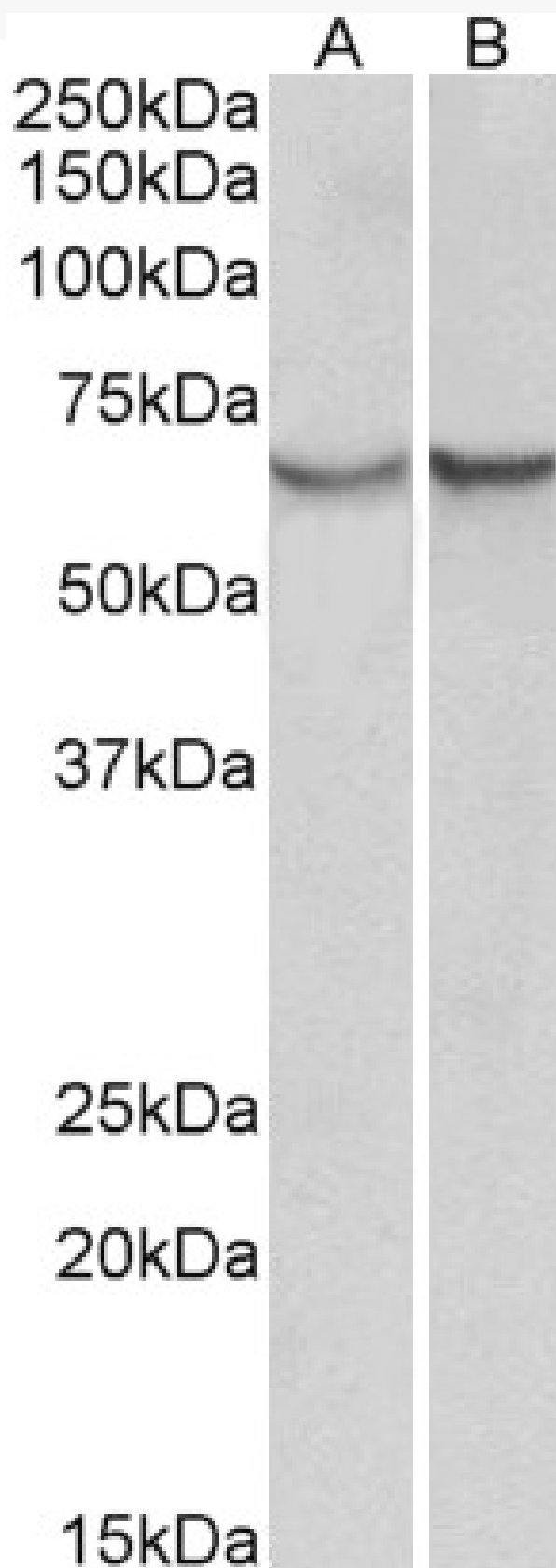


GOAT ANTI-ALPHA-1-ANTICHYMOTRYPSIN (AA222-236) ANTIBODY

SKU: EB12364



SPECIFICATIONS

Formulation	Supplied at 0.5 mg/ml in Tris saline, 0.02% sodium azide, pH7.3 with 0.5% bovine serum albumin.
Unit Size	100 µg
Storage Instructions	Aliquot and store at -20°C. Minimize freezing and thawing.
Synonym / Alias Names	SERPINA3 serpin peptidase inhibitor, clade A (alpha-1 antiproteinase, antitrypsin), member 3 AACT ACT GIG25 alpha-1-antichymotrypsin cell growth-inhibiting gene 24/25 protein growth-inhibiting protein 24 growth-inhibiting protein 25 serine (or cysteine) proteinase inhibitor, clade A, member 3 serpin A3
Accession ID	NP_001076.2
Blocking Peptide	EBP12364
Immunogen	Peptide with sequence C-DPQDTHQSRFYLSKK, from the internal region of the protein sequence according to NP_001076.2.
Peptide Sequence	C-DPQDTHQSRFYLSKK
Purification Method	Purified from goat serum by ammonium sulphate precipitation followed by antigen affinity chromatography using the immunizing peptide.
Shipping Instructions	Refrigerated
Predicted Species	Human
Reactive Species	Human
Human Gene ID	12
Product Grade	https://prod-vector-labs-pimcore-assets.s3.us-east-1.amazonaws.com/assets/products/image/elite_medium.png
ELISA	
Detection Limit	Antibody detection limit dilution 1:128000.
Western Blot	Approx 65kDa band observed in Human Albumin-depleted Serum and Plasma lysates (calculated MW of 47.7kDa according to NP_001076.2). The observed molecular weight corresponds to the glycosylated form. Recommended concentration: 0.3-1µg/ml.
Application Type	Pep-ELISA, WB

DOCUMENTS

- [Data Sheet](#)

GALLERY IMAGES

