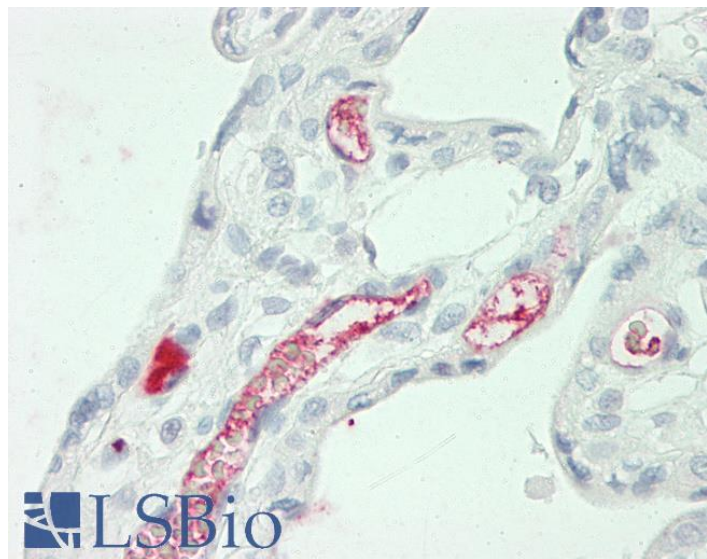


GOAT ANTI-ALPHA-2-MACROGLOBULIN ANTIBODY

SKU: EB12365



SPECIFICATIONS

Formulation Supplied at 0.5 mg/ml in Tris saline, 0.02% sodium azide, pH7.3 with 0.5% bovine serum albumin.

Unit Size 100 µg

Storage Instructions Aliquot and store at -20°C. Minimize freezing and thawing.

Synonym / Alias Names alpha-2-M|C3 and PZP-like alpha-2-macroglobulin domain-containing protein 5|S863-7|FWP007|CPAMD5|A2MD|alpha-2-macroglobulin|A2M

Accession ID NP_000005.2

Blocking Peptide EBP12365

Immunogen Peptide with sequence C-TSLTVRVNYKDRSP, from the internal region of the protein sequence according to NP_000005.2.

Peptide Sequence C-TSLTVRVNYKDRSP

Purification Method Purified from goat serum by ammonium sulphate precipitation followed by antigen affinity chromatography using the immunizing peptide.

Shipping Instructions Refrigerated

Predicted Species	Human
Reactive Species	Human
Human Gene ID	2
Product Grade	https://prod-vector-labs-pimcore-assets.s3.us-east-1.amazonaws.com/assets/products/image/elite_medium.png
IHC Results	Paraffin embedded Human Placenta and Liver. Recommended concentration: 5µg/ml.
ELISA	
Detection Limit	Antibody detection limit dilution 1:32000.
Western Blot	Approx 200kDa band observed in Human Albumin-depleted Serum lysates (calculated MW of 163kDa according to NP_000005.2). The observed molecular weight corresponds to the glycosylated form. Recommended concentration: 0.5-2µg/ml. Primary incubation was 1 hour.
Application Type	Pep-ELISA, WB, IHC

DOCUMENTS

- [Data Sheet](#)

GALLERY IMAGES

