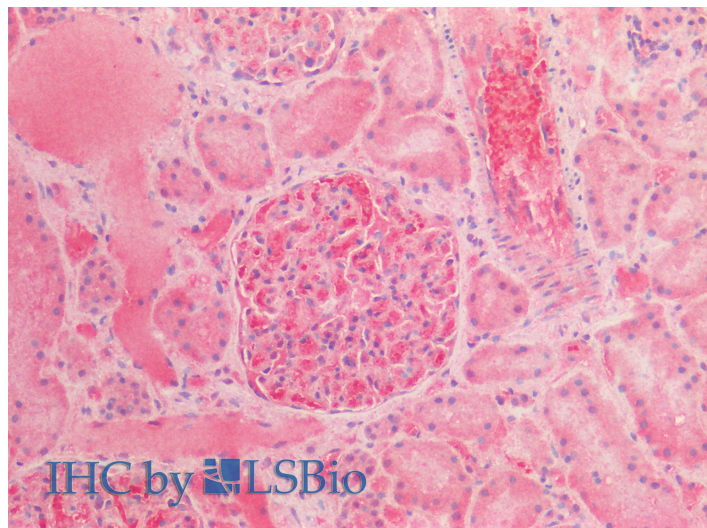


GOAT ANTI-ALPHA-FETOPROTEIN (AA68-82) ANTIBODY

SKU: EB12346



SPECIFICATIONS

Formulation Supplied at 0.5 mg/ml in Tris saline, 0.02% sodium azide, pH7.3 with 0.5% bovine serum albumin.

Unit Size 100 µg

Storage Instructions Aliquot and store at -20°C. Minimize freezing and thawing.

Synonym /

Alias Names alpha-fetoglobulin|alpha-1-fetoprotein|HPAFP|FETA|alpha-fetoprotein|AFP

Accession ID NP_001125.1

Blocking Peptide EBP12346

Immunogen Peptide with sequence C-KDALTAIEKPTGDEQ, from the internal region of the protein sequence according to NP_001125.1.

Peptide Sequence C-KDALTAIEKPTGDEQ

Purification Method Purified from goat serum by ammonium sulphate precipitation followed by antigen affinity chromatography using the immunizing peptide.

Shipping Instructions Refrigerated

Predicted Species	Human
Reactive Species	Human
Human Gene ID	174
Product Grade	https://prod-vector-labs-pimcore-assets.s3.us-east-1.amazonaws.com/assets/products/image/elite_medium.png
IHC Results	Paraffin embedded Human Kidney. Recommended concentration: 5µg/ml.
ELISA	
Detection Limit	Antibody detection limit dilution 1:128000.
Western Blot	Approx 70kDa band observed in lysates of cell line HepG2 (calculated MW of 68.7kDa according to NP_001125.1). Recommended concentration: 0.3-1µg/ml.
Application Type	Pep-ELISA, WB, IHC

DOCUMENTS

- [Data Sheet](#)

GALLERY IMAGES

