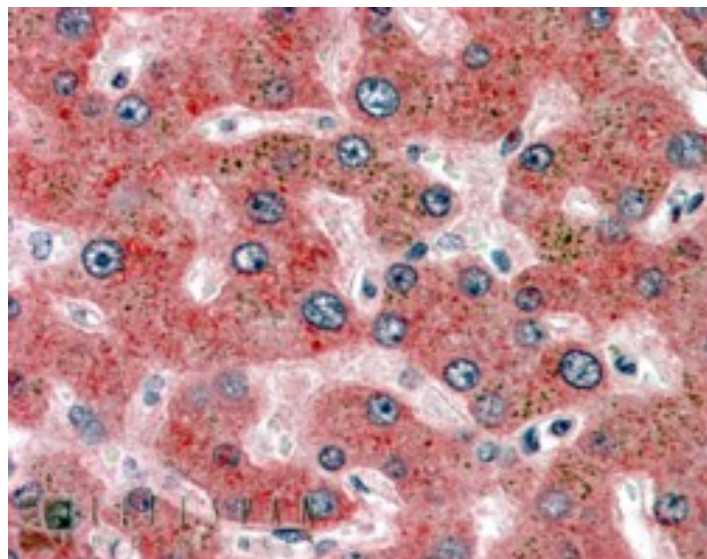


GOAT ANTI-ALPHA2-ANTIPLASMIN ANTIBODY

SKU: EB08777



SPECIFICATIONS

Formulation	Supplied at 0.5 mg/ml in Tris saline, 0.02% sodium azide, pH7.3 with 0.5% bovine serum albumin.
Unit Size	100 µg
Storage Instructions	Aliquot and store at -20°C. Minimize freezing and thawing.
Synonym / Alias Names	serine (or cysteine) proteinase inhibitor, clade F (alpha-2 antiplasmin, pigment epithelium derived factor), member 2 alpha-2-plasmin inhibitor PLI API ALPHA-2-PI AAP A2AP serpin peptidase inhibitor, clade F (alpha-2 antiplasmin, pigment epithelium derived factor), member 2 SERPINF2
Usage Summary	<p>Immunofluorescence: Strong expression of the protein seen in the cytoplasm of A431 cells.</p> <p>Recommended concentration: 10µg/ml.</p> <p>Flow Cytometry: Flow cytometric analysis of A431 cells. Recommended concentration: 10ug/ml.</p>
Accession ID	NP_000925.2; NP_001159393.1
Blocking Peptide	EBP08777
Immunogen	Peptide with sequence C-KDFLQSLKGFPRGDK, from the internal region of the protein sequence according to NP_000925.2; NP_001159393.1.
Product Comments	This antibody is expected to recognise both reported isoforms (NP_000925.2; NP_001159393.1). Reported variants represent identical protein (NP_000925.2; NP_001159392.1).
Peptide Sequence	C-KDFLQSLKGFPRGDK

Purification Method	Purified from goat serum by ammonium sulphate precipitation followed by antigen affinity chromatography using the immunizing peptide.
Shipping Instructions	Refrigerated
Predicted Species	Human
Reactive Species	Human
Human Gene ID	5345
Product Grade	https://prod-vector-labs-pimcore-assets.s3.us-east-1.amazonaws.com/assets/products/image/elite_plus_medium.png
IHC Results	In paraffin embedded Human Liver shows spotty cytoplasm staining in hepatocytes. Recommended concentration: 3-5µg/ml.
ELISA Detection Limit	Antibody detection limit dilution 1:16000.
Western Blot	Approx 70kDa band observed in lysates of cell line HepG2 (calculated MW of 54.6kDa according to NP_000925.2). The observed molecular weight is observed by other sources. Recommended concentration: 0.3-1µg/ml. Primary incubation 1 hour at room temperature. This antibody has been successfully used in WB on Human: Abdul S et al. (2020) PMID: 32034861.
Application Type	Pep-ELISA, WB, IHC, IF, FC

SELECTED REFERENCES

[{"pmid": 32034861, "intro": "**This antibody has been successfully used in Western blot on Human:**", "title": "On the localization of the cleavage site in human alpha-2-antiplasmin, involved in the generation of the non-plasminogen binding form.", "author": "Abdul S, Dekkers DHW, Ariëns RAS, Leebeek FWG, Rijken DC, Uitte de Willige S", "journal": "J Thromb Haemost. 2020 Feb 8"}]

DOCUMENTS

- [Data Sheet](#)

GALLERY IMAGES

