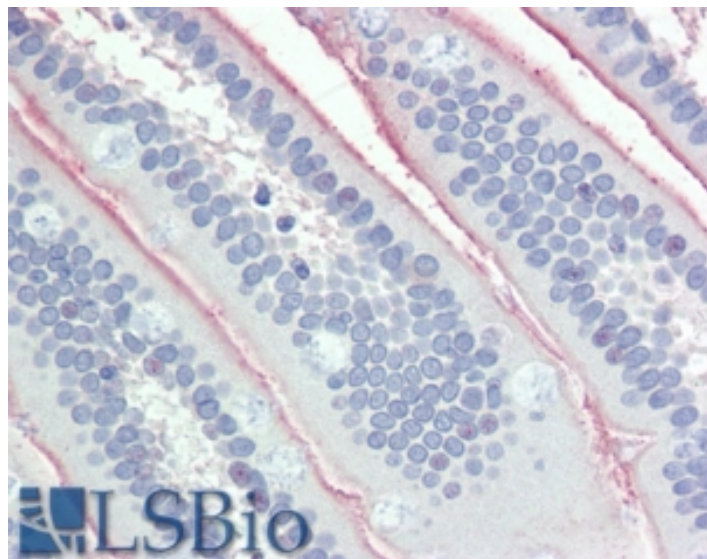


GOAT ANTI-ALPI ANTIBODY

SKU: EB09017



SPECIFICATIONS

Formulation Supplied at 0.5 mg/ml in Tris saline, 0.02% sodium azide, pH7.3 with 0.5% bovine serum albumin.

Unit Size 100 µg

Storage Instructions Aliquot and store at -20°C. Minimize freezing and thawing.

Synonym / Alias Names intestinal alkaline phosphatase|glycerophosphatase|alkaline phosphomonoesterase|Kasahara isozyme|IAP|alkaline phosphatase, intestinal|ALPI

Accession ID NP_001622.2

Blocking Peptide EBP09017

Immunogen Peptide with sequence C-PADASQNGIRLDG, from the internal region of the protein sequence according to NP_001622.2.

Peptide Sequence C-PADASQNGIRLDG

Purification Method Purified from goat serum by ammonium sulphate precipitation followed by antigen affinity chromatography using the immunizing peptide.

Shipping Instructions Refrigerated

Predicted Species	Human
Reactive Species	Human
Human Gene ID	248
Product Grade	https://prod-vector-labs-pimcore-assets.s3.us-east-1.amazonaws.com/assets/products/image/elite_medium.png
IHC Results	In paraffin embedded Human Small Intestines shows staining of the glycocalyx. Recommended concentration, 4-6µg/ml.
ELISA	
Detection Limit	Antibody detection limit dilution 1:4000.
Application Type	Pep-ELISA, IHC

DOCUMENTS

- [Data Sheet](#)

GALLERY IMAGES

