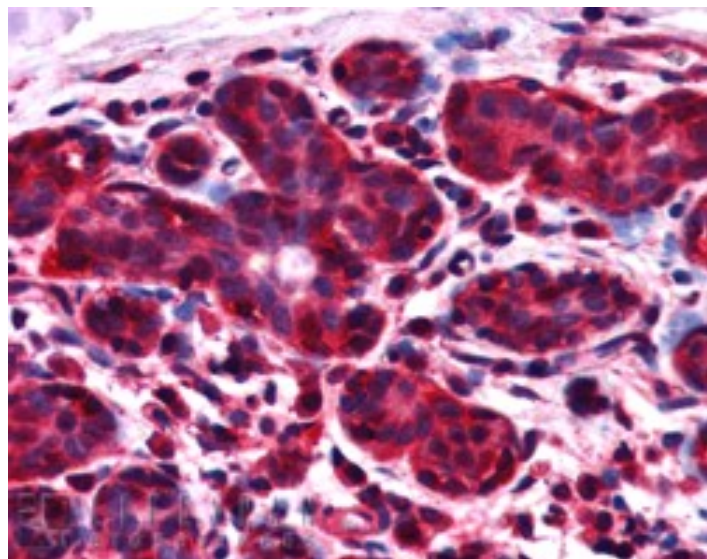


GOAT ANTI-ALS2CR1 / NIF3L1 ANTIBODY

SKU: EB05869



SPECIFICATIONS

Formulation Supplied at 0.5 mg/ml in Tris saline, 0.02% sodium azide, pH7.3 with 0.5% bovine serum albumin.

Unit Size 100 µg

Storage Instructions Aliquot and store at -20°C. Minimize freezing and thawing.

Synonym / Alias Names NIF3L1|ALS2CR1|NIF3 NGG1 interacting factor 3-like 1 (S. pombe)|CALS-7|MDS015|NIF3 (Ngg1 interacting factor 3, S.pombe homolog)-like 1|amyotrophic lateral sclerosis 2 (juvenile) chromosome region, candidate 1|NIF3 NGG1 interacting factor 3-like 1|OTTHUMP00000206190|OTTHUMP00000206191|OTTHUMP00000206192

Accession ID NP_001129511.1; NP_068596.2

Blocking Peptide EBP05869

Immunogen Peptide with sequence C-ILSETDRDPLQVV, from the C Terminus of the protein sequence according to NP_001129511.1; NP_068596.2.

Product Comments This antibody is expected to recognise both reported isoforms. Variants (NP_001135827.1; NP_068596.2) encode the same isoform.

Peptide Sequence C-ILSETDRDPLQVV

Purification Method	Purified from goat serum by ammonium sulphate precipitation followed by antigen affinity chromatography using the immunizing peptide.
Shipping Instructions	Refrigerated
Predicted Species	Human, Mouse
Reactive Species	Human
Human Gene ID	60491
Mouse Gene ID	65102
Product Grade	https://prod-vector-labs-pimcore-assets.s3.us-east-1.amazonaws.com/assets/products/image/elite_medium.png
IHC Results	In paraffin embedded Human Breast shows strong cytoplasm staining in epithelial and myoepithelial duct cells. Recommended concentration, 2-4µg/ml.
ELISA Detection Limit	Antibody detection limit dilution 1:32000.
Western Blot	Approx 40kDa band seen in Human Heart and Human Testis extracts [Predicted MW of approx. 39kDa according to NP_068596]. Recommended for use at 0.2-1µg/ml.
Application Type	Pep-ELISA, WB, IHC

DOCUMENTS

- [Data Sheet](#)

GALLERY IMAGES

