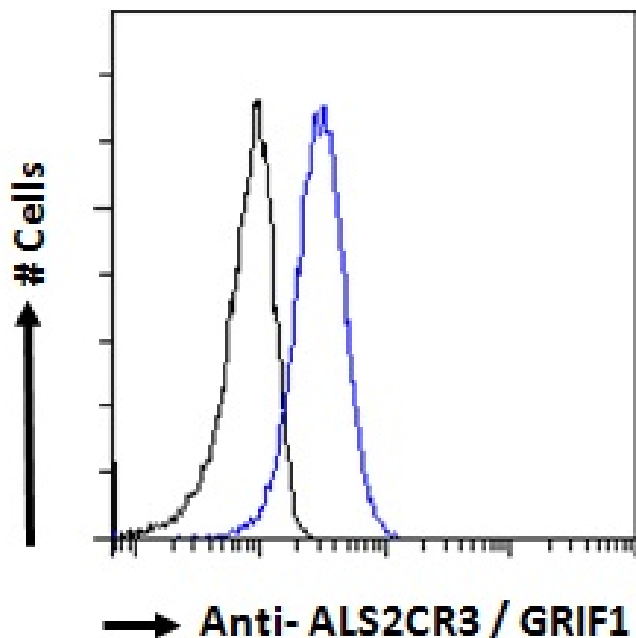


GOAT ANTI-ALS2CR3 / GRIF1 ANTIBODY

SKU: EB05870



SPECIFICATIONS

Formulation Supplied at 0.5 mg/ml in Tris saline, 0.02% sodium azide, pH7.3 with 0.5% bovine serum albumin.

Unit Size 100 µg

Storage Instructions Aliquot and store at -20°C. Minimize freezing and thawing.

Synonym / Alias Names OIP98|trafficking protein, kinesin binding 2|likely ortholog of rat GABA(A) receptor-associated protein (GRIF-1)|KIAA0549|GRIF-1|CALS-C|GRIF1|amyotrophic lateral sclerosis 2 (juvenile) chromosome region, candidate 3|ALS2CR3|TRAK2

Usage Summary **Immunofluorescence:** Strong expression of the protein seen in U2OS cells. Recommended concentration: 10µg/ml. **Flow Cytometry:** Flow cytometric analysis of HeLa cells. Recommended concentration: 10ug/ml.

Accession ID NP_055864.2

Blocking Peptide EBP05870

Immunogen Peptide with sequence CTSSPKMGVLKED, from the C Terminus of the protein sequence according to NP_055864.2.

Peptide Sequence	CTSSPKMGVLKED
Purification Method	Purified from goat serum by ammonium sulphate precipitation followed by antigen affinity chromatography using the immunizing peptide.
Shipping Instructions	Refrigerated
Predicted Species	Human, Mouse, Rat, Pig, Cow
Reactive Species	Human
Human Gene ID	66008
Product Grade	https://prod-vector-labs-pimcore-assets.s3.us-east-1.amazonaws.com/assets/products/image/elite_medium.png
ELISA Detection Limit	Antibody detection limit dilution 1:32000.
Application Type	Pep-ELISA, FC, IF

DOCUMENTS

- [Data Sheet](#)

GALLERY IMAGES

