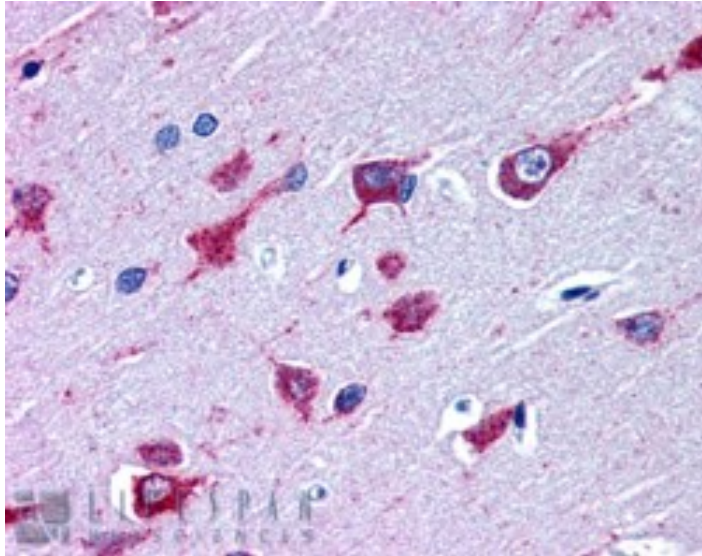




GOAT ANTI-ALSIN / ALS2 ANTIBODY

SKU: EB05316



SPECIFICATIONS

Formulation Supplied at 0.5 mg/ml in Tris saline, 0.02% sodium azide, pH7.3 with 0.5% bovine serum albumin.

Unit Size 100 µg

Storage Instructions Aliquot and store at -20°C. Minimize freezing and thawing.

Synonym /

Alias Names alsin|MGC87187|FLJ31851|ALS2CR6|KIAA1563|IAHSP|PLSJ|ALSJ|amyotrophic lateral sclerosis 2 (juvenile)|ALS2

Accession ID NP_065970.2

Blocking Peptide EBP05316

Immunogen Peptide with sequence LKACYYQIQREKLN, from the C Terminus of the protein sequence according to NP_065970.2.

Peptide Sequence LKACYYQIQREKLN

Purification Method Purified from goat serum by ammonium sulphate precipitation followed by antigen affinity chromatography using the immunizing peptide.

Shipping Instructions Refrigerated



Predicted Species	Human, Mouse, Rat, Dog, Cow
Reactive Species	Human
Human Gene ID	57679
Product Grade	https://prod-vector-labs-pimcore-assets.s3.us-east-1.amazonaws.com/assets/products/image/elite_medium.png
IHC Results	In paraffin embedded Human Cortex shows pixulate cytoplasm staining in some neuronal cells. Recommended concentration, 3-5µg/ml.
ELISA	
Detection Limit	Antibody detection limit dilution 1:8000.
Western Blot	No signal obtained yet but low background observed in Human Brain extracts at upto 1µg/ml.
Application Type	Pep-ELISA, IHC

DOCUMENTS

- [Data Sheet](#)

GALLERY IMAGES

