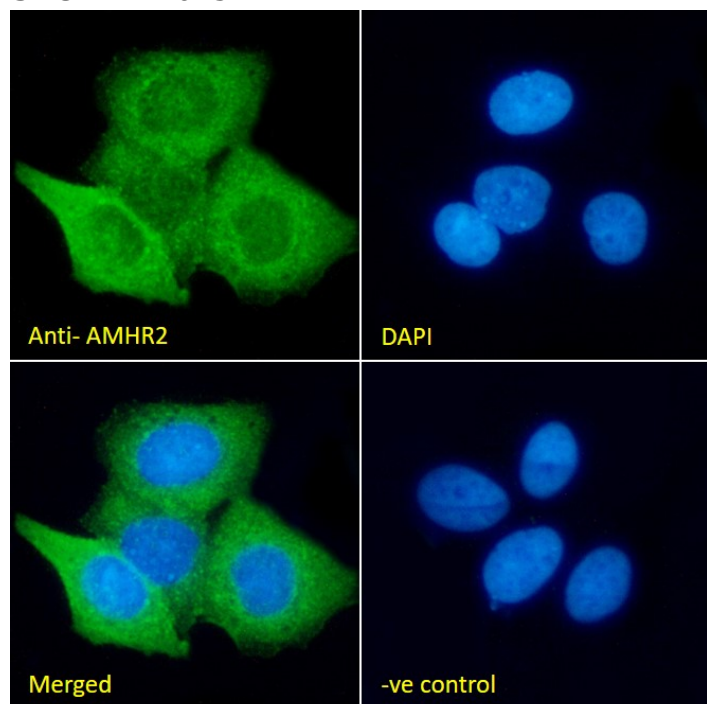


GOAT ANTI-AMHR2 (AA88-99) ANTIBODY

SKU: EB12625



SPECIFICATIONS

Formulation	Supplied at 0.5 mg/ml in Tris saline, 0.02% sodium azide, pH7.3 with 0.5% bovine serum albumin.
Unit Size	100 µg
Storage	
Instructions	Aliquot and store at -20°C. Minimize freezing and thawing.
Synonym / Alias	anti-Muellerian hormone type II receptor Mullerian inhibiting substance type II receptor Muellerian inhibiting substance type II receptor MIS type II receptor AMH type II receptor MRII MISRII MISR2 AMHR anti-Mullerian hormone receptor, type II AMHR2
Names	
Usage Summary	<p>Immunofluorescence: Strong expression of the protein seen in MCF7 cells. Recommended concentration: 10µg/ml.</p> <p>Flow Cytometry: Flow cytometric analysis of MCF7 cells. Recommended concentration: 10ug/ml.</p>
Accession ID	NP_065434.1; NP_001158162.1; NP_001158163.1
Blocking Peptide	EBP12625

Immunogen	Peptide with sequence ESLHCDPSPRAH, from the internal region of the protein sequence according to NP_065434.1; NP_001158162.1; NP_001158163.1.
Product Comments	This antibody is expected to recognize all reported isoforms (NP_065434.1; NP_001158162.1; NP_001158163.1).
Peptide Sequence	ESLHCDPSPRAH
Purification Method	Purified from goat serum by ammonium sulphate precipitation followed by antigen affinity chromatography using the immunizing peptide.
Shipping Instructions	Refrigerated
Predicted Species	Human
Reactive Species	Human
Human Gene ID	269
Product Grade	https://prod-vector-labs-pimcore-assets.s3.us-east-1.amazonaws.com/assets/products/image/elite_plus_medium.png
ELISA Detection Limit	Antibody detection limit dilution 1:128000.
Western Blot	Approx. 60+65kDa bands were observed in lysates of cell line MCF7 (calculated MW of 62.7kDa according to NP_065434.1). Recommended concentration: 0.3-1ug/ml. Primary incubation 1 hour at room temperature.
Application Type	Pep-ELISA, WB, IF, FC

DOCUMENTS

- [Data Sheet](#)

GALLERY IMAGES

