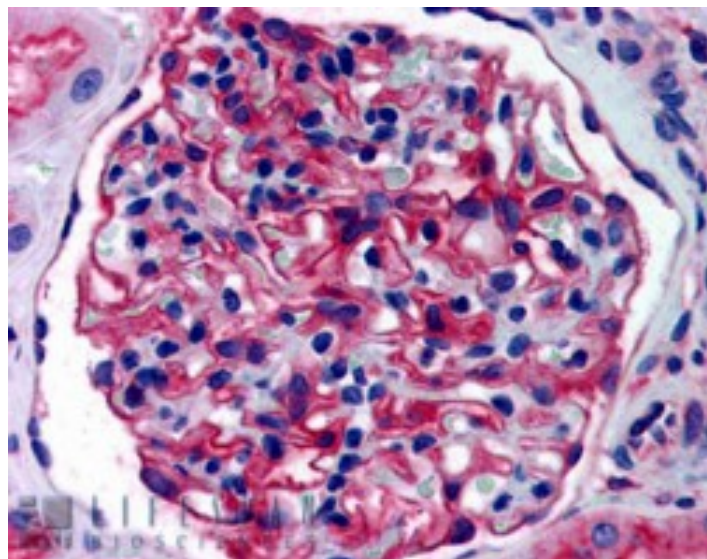


GOAT ANTI-AMINOPEPTIDASE A ANTIBODY

SKU: EB06798



SPECIFICATIONS

Formulation Supplied at 0.5 mg/ml in Tris saline, 0.02% sodium azide, pH7.3 with 0.5% bovine serum albumin.

Unit Size 100 µg

Storage Instructions Aliquot and store at -20°C. Minimize freezing and thawing.

Synonym / Alias Names glutamyl aminopeptidase|CD249|gp160|APA|HGNC:3355|glutamyl aminopeptidase (aminopeptidase A)|ENPEP|aminopeptidase A

Accession ID NP_001968.3

Blocking Peptide EBP06798

Immunogen Peptide with sequence C-EQYQKTSLAQEKEK, from the internal region of the protein sequence according to NP_001968.3.

Peptide Sequence C-EQYQKTSLAQEKEK

Purification Method Purified from goat serum by ammonium sulphate precipitation followed by antigen affinity chromatography using the immunizing peptide.

Shipping Instructions Refrigerated

Predicted Species	Human, Mouse, Rat, Dog, Pig, Cow
Reactive Species	Human, Rat
Human Gene ID	2028
Mouse Gene ID	13809
Product Grade	https://prod-vector-labs-pimcore-assets.s3.us-east-1.amazonaws.com/assets/products/image/elite_medium.png
IHC Results	In paraffin embedded Human Kidney shows staining of basement membrane and the mesangium in the glomerulus. Recommended concentration: 3-5µg/ml.
ELISA	
Detection Limit	Antibody detection limit dilution 1:64000.
Western Blot	Approx 170kDa band observed in Human Brain and Testis lysates (calculated MW of 109kDa according to NP_001968.2). Primary incubation was for 1 hour. The observed molecular weight corresponds to earlier findings in literature with different antibodies (Ando et al, J Clin Endocrinol Metab. 2002 May;87(5):2303-9; PMID: 11994381). Recommended concentration: 1-3µg/ml. This antibody has been successfully used in WB on Rat: PMID: 28399178 and 25470983.
Application Type	Pep-ELISA, WB, IHC

SELECTED REFERENCES

[{"pmid": 25470983, "intro": "**This antibody has been successfully used in WB on Rat:**", "title": "Immunological detection of glutamyl aminopeptidase in urine samples from cisplatin-treated rats.", "author": "Montoro-Molina S, Quesada A, Zafra-Ruiz PV, O'Valle F, Vargas F, de Gracia Mdel C, Osuna A, Wangenstein R", "journal": "Proteomics Clin Appl. 2015 Jun;9(5-6):630-5. "}, {"pmid": 28399178, "intro": "**This antibody has been successfully used in WB on Rat:**", "title":

"Glutamyl aminopeptidase in microvesicular and exosomal fractions of urine is related with renal dysfunction in cisplatin-treated rats.", "author": "Quesada A, Segarra AB, Montoro-Molina S, de Gracia MD, Osuna A, O'Valle F, Gómez-Guzmán M, Vargas F, Wangenstein R.", "journal": "PLoS One. 2017 Apr 11;12(4):e0175462"}]

DOCUMENTS

- [Data Sheet](#)

GALLERY IMAGES

