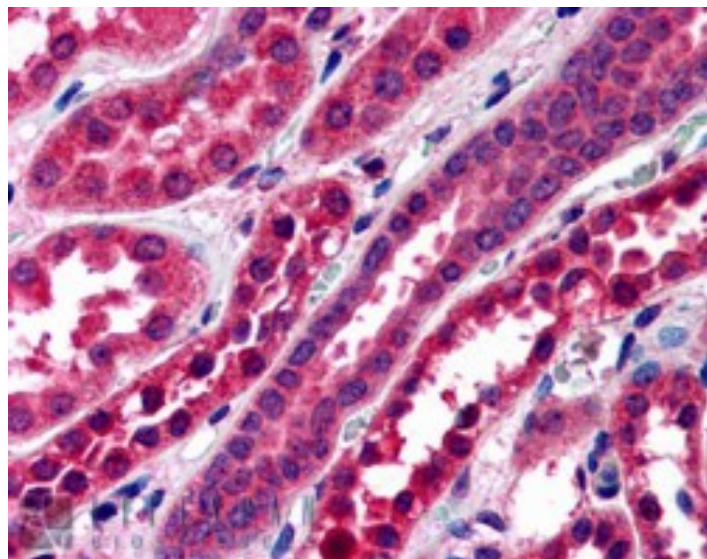


GOAT ANTI-AMISYN / STXBP6 ANTIBODY

SKU: EB05935



SPECIFICATIONS

Formulation Supplied at 0.5 mg/ml in Tris saline, 0.02% sodium azide, pH7.3 with 0.5% bovine serum albumin.

Unit Size 100 µg

Storage Instructions Aliquot and store at -20°C. Minimize freezing and thawing.

Synonym / Alias Names STXBP6|syntaxin binding protein 6 (amisyn)|amisyn|HSPC156|amisyn|syntaxin binding protein 6|FLJ39638|OTTHUMP00000178754

Accession ID NP_054897.4

Blocking Peptide EBP05935

Immunogen Peptide with sequence SAKSAISKEIFAP-C, from the N Terminus of the protein sequence according to NP_054897.4.

Peptide Sequence SAKSAISKEIFAP-C

Purification Method Purified from goat serum by ammonium sulphate precipitation followed by antigen affinity chromatography using the immunizing peptide.

Shipping Instructions Refrigerated

Predicted Species	Human, Mouse, Rat, Dog, Cow
Reactive Species	Human
Human Gene ID	29091
Mouse Gene ID	217517
Product Grade	https://prod-vector-labs-pimcore-assets.s3.us-east-1.amazonaws.com/assets/products/image/elite_medium.png
IHC Results	In paraffin embedded Human Kidney shows cytoplasm staining of PCT and DCT cells Recommended concentration, 3-5µg/ml.
ELISA	
Detection Limit	Antibody detection limit dilution 1:32000.
Western Blot	Preliminary experiments gave bands at both approx 25kDa and approx 45kDa in Human Brain extracts at 0.1µg/ml. Please note that currently we cannot find an explanation in the literature for the 45kDa band we observe given the predicted size of approx. 24Kda according to NP_054897. We would appreciate any feedback from people in the field - have any results been reported with other antibodies/lysates? Have any splice variants/modified forms been reported?
Application Type	Pep-ELISA, IHC

DOCUMENTS

- [Data Sheet](#)

GALLERY IMAGES

