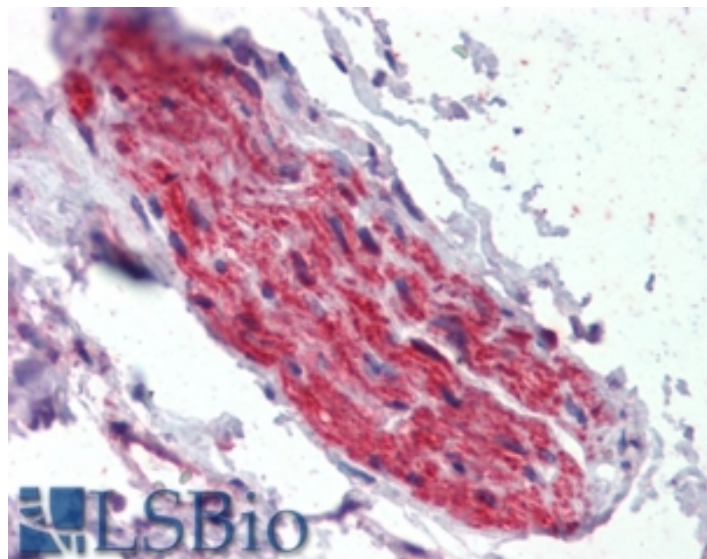


# GOAT ANTI-ANKYRIN G ANTIBODY

**SKU:** EB08631



## SPECIFICATIONS

**Formulation** Supplied at 0.5 mg/ml in Tris saline, 0.02% sodium azide, pH7.3 with 0.5% bovine serum albumin.

**Unit Size** 100 µg

**Storage Instructions** Aliquot and store at -20°C. Minimize freezing and thawing.

**Synonym / Alias Names** ankyrin-3, node of Ranvier|ankyrin G119|ankyrin 3|FLJ45464|ANKYRIN-G|RP11-369L1.1|ankyrin 3, node of Ranvier (ankyrin G)|ANK3

**Accession ID** NP\_066267.2; NP\_001140.2

**Blocking Peptide** EBP08631

**Immunogen** Peptide with sequence C-SWQNETSSGNLE, from the internal region of the protein sequence according to NP\_066267.2; NP\_001140.2.

**Product Comments** This antibody is expected to recognise both reported isoforms (NP\_001140.2; NP\_066267.2)

**Peptide Sequence** C-SWQNETSSGNLE

**Purification Method** Purified from goat serum by ammonium sulphate precipitation followed by antigen affinity chromatography using the immunizing peptide.

<b>Shipping Instructions</b>	Refrigerated
<b>Predicted Species</b>	Human, Mouse, Rat, Cow
<b>Reactive Species</b>	Human
<b>Human Gene ID</b>	288
<b>Product Grade</b>	<a href="https://prod-vector-labs-pimcore-assets.s3.us-east-1.amazonaws.com/assets/products/image/elite_medium.png">https://prod-vector-labs-pimcore-assets.s3.us-east-1.amazonaws.com/assets/products/image/elite_medium.png</a> Paraffin embedded Prostate and Human Brain (Cerebellum). Recommended concentration: 3.75µg/ml.
<b>IHC Results</b>	<p>Cryosection of immersion-fixed (1% PFA/0.5% methanol) Human Hypothalamus. Optimal dilution: 1:5000. *Vibratome prepared sample for optimal labelling.</p>
<b>ELISA</b>	
<b>Detection Limit</b>	Antibody detection limit dilution 1:16000.
<b>Application Type</b>	Pep-ELISA, IHC

## DOCUMENTS

- [Data Sheet](#)

## GALLERY IMAGES

