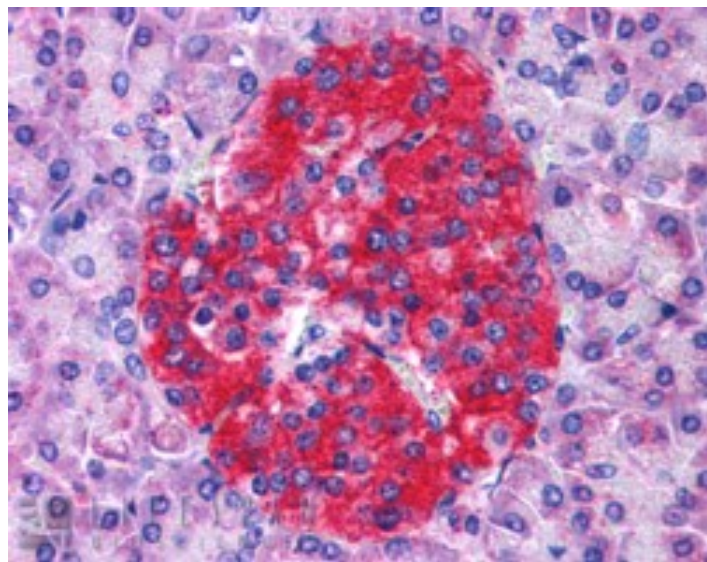


GOAT ANTI-ANNEXIN A10 / ANNEXIN 14 ANTIBODY

SKU: EB05308



SPECIFICATIONS

Formulation Supplied at 0.5 mg/ml in Tris saline, 0.02% sodium azide, pH7.3 with 0.5% bovine serum albumin.

Unit Size 100 µg

Storage Instructions Aliquot and store at -20°C. Minimize freezing and thawing.

Synonym /

Alias ANXA10|annexin A10|ANX14|annexin 14

Names

Accession ID NP_009124.2

Blocking Peptide EBP05308

Immunogen Peptide with sequence FCGDYVQGTIFPAPN, from the N Terminus of the protein sequence according to NP_009124.2.

Peptide Sequence FCGDYVQGTIFPAPN

Purification Method Purified from goat serum by ammonium sulphate precipitation followed by antigen affinity chromatography using the immunizing peptide.

Shipping Instructions Refrigerated

Predicted Species	Human, Mouse, Rat, Cow
Reactive Species	Human
Human Gene ID	11199
Product Grade	https://prod-vector-labs-pimcore-assets.s3.us-east-1.amazonaws.com/assets/products/image/elite_medium.png
IHC Results	In paraffin embedded Human Pancreas shows staining of islet of Langerhans . Recommended concentration, 3-5µg/ml.
ELISA Detection Limit	Antibody detection limit dilution 1:8000.
Western Blot	Preliminary experiments (at 1ug/ml) gave an approx 45-48kDa band in Hela, A431 and Human Kidney lysates. Please note that currently we cannot find an explanation in the literature for the band we observe given the predicted size of approx. 37kDa according to NP_009124. We would appreciate any feedback from people in the field - have any results been reported with other antibodies/lysates? Have any further splice variants/modified forms been reported?
Application Type	Pep-ELISA, IHC

DOCUMENTS

- [Data Sheet](#)

GALLERY IMAGES

