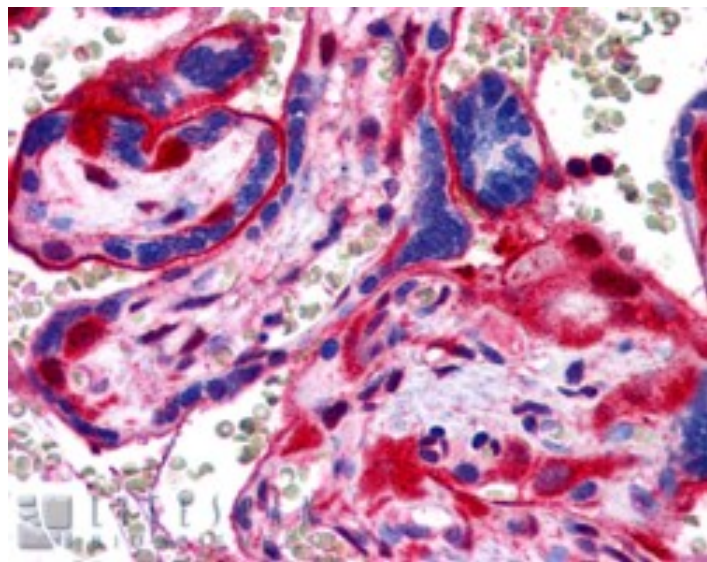


GOAT ANTI-ANNEXIN A11 ANTIBODY

SKU: EB05307



SPECIFICATIONS

Formulation Supplied at 0.5 mg/ml in Tris saline, 0.02% sodium azide, pH7.3 with 0.5% bovine serum albumin.

Unit Size 100 µg

Storage Instructions Aliquot and store at -20°C. Minimize freezing and thawing.

Synonym / Alias Names annexin-11|CAP-50|56 kDa autoantigen|calcyclin-associated annexin 50|autoantigen, 56-kD|annexin XI|CAP50|ANX11|annexin A11|ANXA11

Accession ID NP_001148.1

Blocking Peptide EBP05307

Immunogen Peptide with sequence YPGYPPPPGGYPP-C, from the N Terminus of the protein sequence according to NP_001148.1.

Product Comments Reported variants represent identical protein: NP_001148.1; NP_665875.1 and NP_665876.1.

Peptide Sequence YPGYPPPPGGYPP-C

Purification Method Purified from goat serum by ammonium sulphate precipitation followed by antigen affinity chromatography using the immunizing peptide.

| | |
|------------------------------|---|
| Shipping Instructions | Refrigerated |
| Predicted Species | Human |
| Reactive Species | Human |
| Human Gene ID | 311 |
| Product Grade | https://prod-vector-labs-pimcore-assets.s3.us-east-1.amazonaws.com/assets/products/image/elite_medium.png |
| IHC Results | In paraffin embedded Human Placenta shows strong staining of Basement Membrane in trophoblasts. Recommended concentration, 3-5µg/ml. |
| ELISA | |
| Detection Limit | Antibody detection limit dilution 1:32000. |
| Western Blot | Approx 55kDa band observed in lysates of cell lines HeLa and Jurkat (calculated MW of 54.4kDa according to NP_001148.1). Recommended concentration: 0.01-0.03µg/ml. |
| Application Type | Pep-ELISA, WB, IHC |

DOCUMENTS

- [Data Sheet](#)

GALLERY IMAGES

