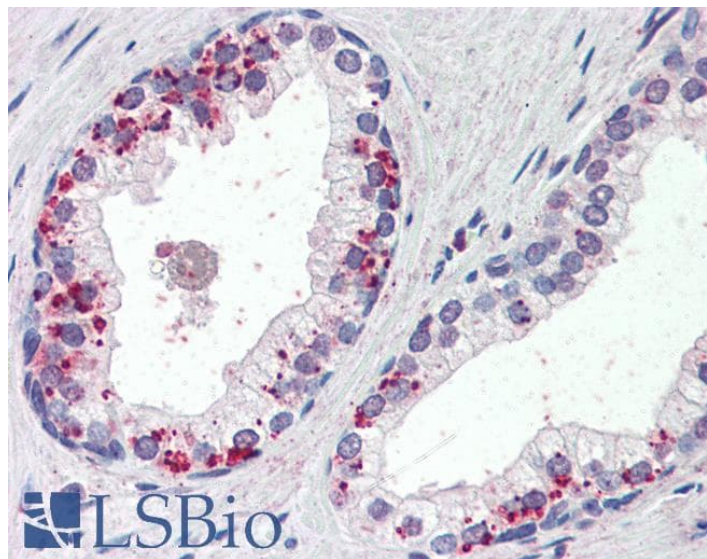


GOAT ANTI-ANNEXIN I ANTIBODY

SKU: EB09185



SPECIFICATIONS

Formulation Supplied at 0.5 mg/ml in Tris saline, 0.02% sodium azide, pH7.3 with 0.5% bovine serum albumin.

Unit Size 100 µg

Storage Instructions Aliquot and store at -20°C. Minimize freezing and thawing.

Synonym /

Alias Names lipocortin I|annexin I (lipocortin I)|LPC1|ANX1|annexin A1|ANXA1|annexin I

Accession ID NP_000691.1

Blocking Peptide EBP09185

Immunogen Peptide with sequence CQAILDETKGDYEK, from the C Terminus of the protein sequence according to NP_000691.1.

Peptide Sequence CQAILDETKGDYEK

Purification Method Purified from goat serum by ammonium sulphate precipitation followed by antigen affinity chromatography using the immunizing peptide.

Shipping Instructions Refrigerated

Predicted Species	Human, Mouse, Rat, Dog, Cow, Pig
Reactive Species	Human, Mouse, Rat, Pig
Human Gene ID	301
Mouse Gene ID	16952
Rat Gene ID	25380
Product Grade	https://prod-vector-labs-pimcore-assets.s3.us-east-1.amazonaws.com/assets/products/image/elite_medium.png
ELISA Detection Limit	Antibody detection limit dilution 1:4000.
Western Blot	Approx 37kDa band observed in lysates of cell lines K562 and NIH3T3 (calculated MW of 38.7kDa according to Human NP_000691.1 and Mouse NP_034860.2). Approx 37kDa band observed in Rat and Pig Spleen lysates (calculated MW of 38.7kDa according to Pig NP_001157470.1). Recommended concentration: 1-3µg/ml.
Application Type	Pep-ELISA, WB

DOCUMENTS

- [Data Sheet](#)

GALLERY IMAGES

