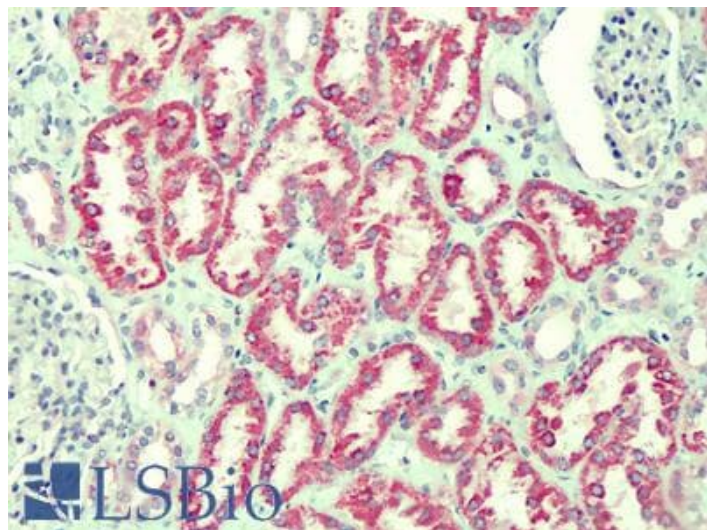


GOAT ANTI-ANTXR2 / CMG2 ANTIBODY

SKU: EB09970



SPECIFICATIONS

Formulation Supplied at 0.5 mg/ml in Tris saline, 0.02% sodium azide, pH7.3 with 0.5% bovine serum albumin.

Unit Size 100 µg

Storage Instructions Aliquot and store at -20°C. Minimize freezing and thawing.

Synonym / Alias Names ANTXR2|MGC45856|MGC111533|JHF|ISH|FLJ31074|CMG-2|CMG2|capillary morphogenesis protein 2|anthrax toxin receptor 2

Accession ID NP_477520.2; NP_001139266.1

Blocking Peptide EBP09970

Immunogen Peptide with sequence C-HEGLKLANEQIK, from the internal region of the protein sequence according to NP_477520.2; NP_001139266.1.

Product Comments This antibody is expected to recognize both reported isoforms (NP_477520.2; NP_001139266.1).

Peptide Sequence C-HEGLKLANEQIK

Purification Method Purified from goat serum by ammonium sulphate precipitation followed by antigen affinity chromatography using the immunizing peptide.

| | |
|------------------------------|---|
| Shipping Instructions | Refrigerated |
| Predicted Species | Human, Mouse, Rat, Dog, Cow |
| Reactive Species | Human |
| Human Gene ID | 118429 |
| Product Grade | https://prod-vector-labs-pimcore-assets.s3.us-east-1.amazonaws.com/assets/products/image/elite_medium.png |
| IHC Results | Paraffin embedded Human Liver and Kidney. Recommended concentration: 2.5µg/ml. |
| ELISA | |
| Detection Limit | Antibody detection limit dilution 1:16000. |
| Application Type | Pep-ELISA, IHC |

DOCUMENTS

- [Data Sheet](#)

GALLERY IMAGES

