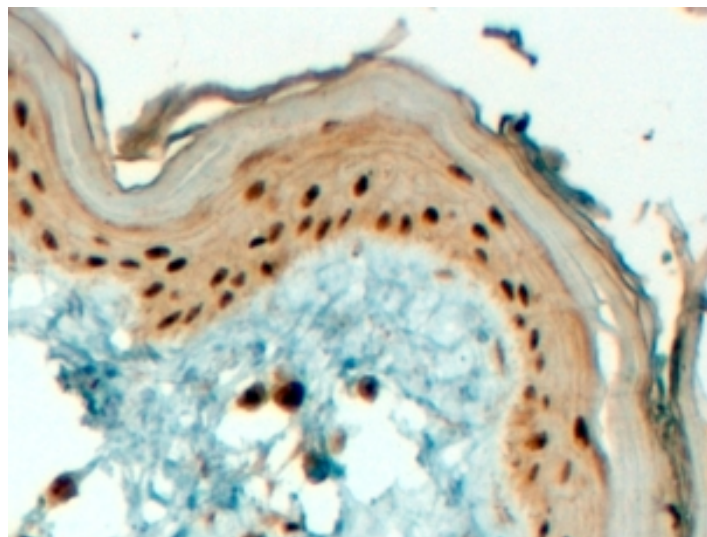


# GOAT ANTI-AP-2 GAMMA ANTIBODY

**SKU:** EB06655



## SPECIFICATIONS

**Formulation** Supplied at 0.5 mg/ml in Tris saline, 0.02% sodium azide, pH7.3 with 0.5% bovine serum albumin.

**Unit Size** 100 µg

**Storage Instructions** Aliquot and store at -20°C. Minimize freezing and thawing.

**Synonym / Alias Names** transcription factor AP-2 gamma (activating enhancer-binding protein 2 gamma)|estrogen receptor factor 1|transcription factor AP-2 gamma (activating enhancer binding protein 2 gamma)|AP2-GAMMA|hAP-2g|TFAP2G|ERF1|TFAP2C

**Accession ID** NP\_003213.1

**Blocking Peptide** EBP06655

**Immunogen** Peptide with sequence C-NKTLEKMEKHRK, from the C Terminus of the protein sequence according to NP\_003213.1.

**Peptide Sequence** C-NKTLEKMEKHRK

**Purification Method** Purified from goat serum by ammonium sulphate precipitation followed by antigen affinity chromatography using the immunizing peptide.

**Shipping Instructions** Refrigerated

<b>Predicted Species</b>	Human, Rat, Mouse, Dog, Pig, Cow
<b>Reactive Species</b>	Human
<b>Human Gene ID</b>	7022
<b>Product Grade</b>	<a href="https://prod-vector-labs-pimcore-assets.s3.us-east-1.amazonaws.com/assets/products/image/elite_medium.png">https://prod-vector-labs-pimcore-assets.s3.us-east-1.amazonaws.com/assets/products/image/elite_medium.png</a>
<b>IHC Results</b>	In paraffin embedded Human Skin shows nuclear staining of keratinocytes. Recommended concentration, 2-3µg/ml.
<b>ELISA Detection Limit</b>	Antibody detection limit dilution 1:128000.
<b>Western Blot</b>	WB experiments gave bands at approx 75kDa and 22kDa in Human Placenta and Ovary lysates after 0.1µg/ml antibody staining. Please note that currently we cannot find an explanation in the literature for the bands we observe given the calculated size of 49.2kDa according to NP_003213.1. Both detected bands were successfully blocked by incubation with the immunizing peptide (and BLAST results with the immunizing peptide sequence did not identify any other proteins to explain the additional bands). We would appreciate any feedback from people in the field - have any results been reported with other antibodies/lysates? Have any further splice variants/modified forms been reported?
<b>Application Type</b>	Pep-ELISA, IHC

## DOCUMENTS

- [Data Sheet](#)

## GALLERY IMAGES

