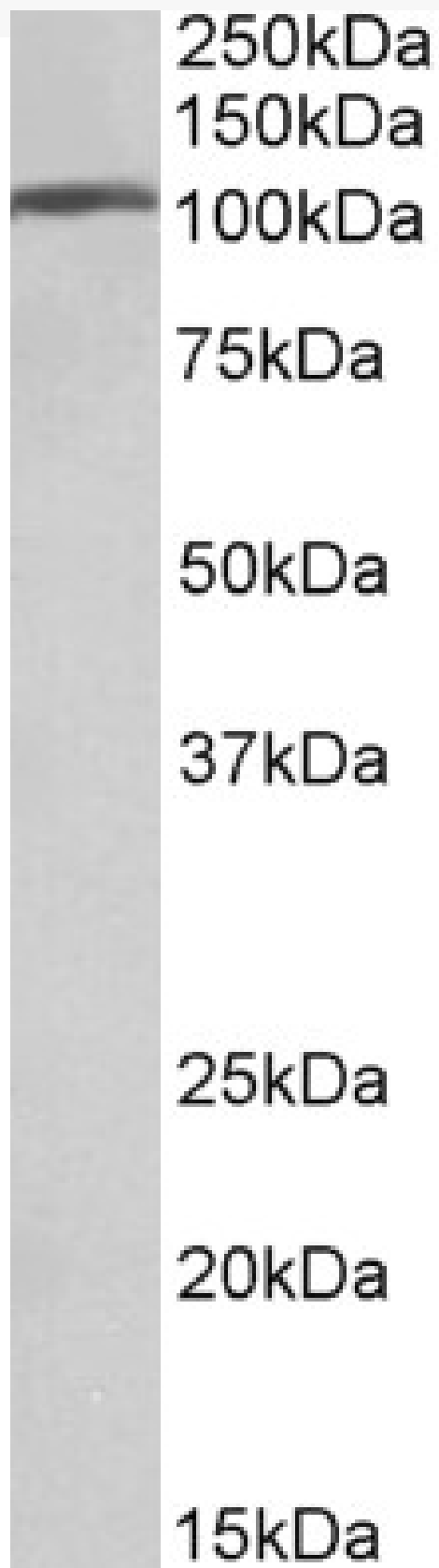


GOAT ANTI-AP2A1 (AA706-727), BIOTINLYATED ANTIBODY

SKU: EB11875-B



SPECIFICATIONS

| | |
|------------------------------|---|
| Formulation | Supplied at 0.5 mg/ml in Tris saline, 0.02% sodium azide, pH7.3 with 0.5% bovine serum albumin. |
| Unit Size | 100 µg |
| Storage Instructions | Aliquot and store at -20°C. Minimize freezing and thawing. |
| Synonym / Alias Names | AP2A1 adaptor related protein complex 2 alpha 1 subunit ADTAA AP2-ALPHA CLAPA1 100 kDa coated vesicle protein A adapter-related protein complex 2 alpha-1 subunit adapter-related protein complex 2 subunit alpha-1 adaptin, alpha A adaptor protein complex AP-2 subunit alpha-1 adaptor related protein complex 2, alpha 1 subunit adaptor-related protein complex 2 subunit alpha-1 adaptor-related protein complex 2, alpha 1 subunit alpha-adaptin A alpha1-adaptin clathrin assembly protein complex 2 alpha-A large chain clathrin-associated/assembly/adaptor protein, large, alpha 1 plasma membrane adaptor HA2/AP2 adaptin alpha A subunit |
| Accession ID | NP_055018.2 |
| Blocking Peptide | EBP11875-B |
| Immunogen | Peptide with sequence CELEPPAPESPMALLADPAPAAD., from the internal region of the protein sequence according to NP_055018.2. |
| Product Comments | This antibody is expected to recognize reported isoform 1 (NP_055018.2) only. |
| Peptide Sequence | CELEPPAPESPMALLADPAPAAD. |
| Purification Method | Purified from goat serum by ammonium sulphate precipitation followed by antigen affinity chromatography using the immunizing peptide. |
| Shipping Instructions | Refrigerated |
| Predicted Species | Human, Mouse, Rat, Pig, Cow |
| Reactive Species | Human, Mouse |
| Human Gene ID | 160 |
| Product Grade | https://prod-vector-labs-pimcore-assets.s3.us-east-1.amazonaws.com/assets/products/image/elite_medium.png |
| ELISA Detection Limit | Antibody detection limit dilution 1:128000. |
| Western Blot | Approx 110kDa band observed in Human Brain (Frontal Cortex) lysates (calculated MW of 108kDa according to NP_055018.2). The same band is observed in Mouse Brain, but not in Mouse Liver or Mouse Kidney lysates. See non-biotinylated parental product's datasheet for further QC data. Recommended concentration: 0.01-0.03µg/ml. |
| Application Type | Pep-ELISA, WB |

DOCUMENTS

- [Data Sheet](#)

GALLERY IMAGES

