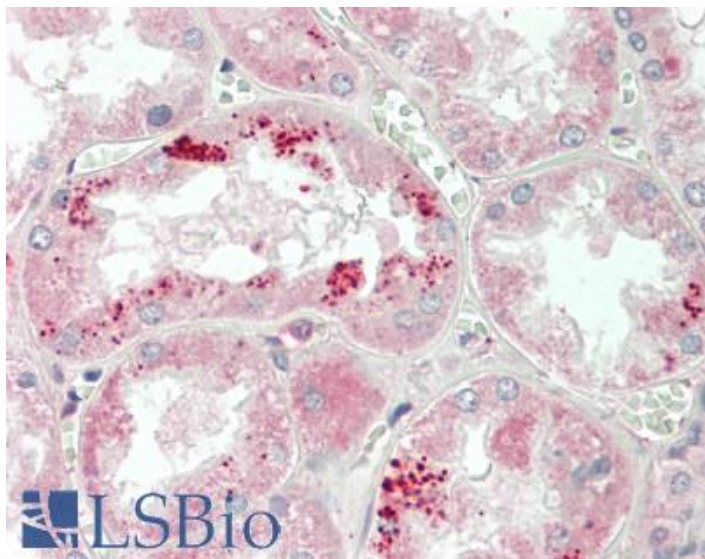


GOAT ANTI-APOA1 ANTIBODY

SKU: EB11963



SPECIFICATIONS

Formulation Supplied at 0.5 mg/ml in Tris saline, 0.02% sodium azide, pH7.3 with 0.5% bovine serum albumin.

Unit Size 100 µg

Storage Instructions Aliquot and store at -20°C. Minimize freezing and thawing.

Synonym /

Alias apoA-I|apo-AI|apolipoprotein A-I|APOA1

Names

Accession ID NP_000030.1

Blocking Peptide EBP11963

Immunogen Peptide with sequence C-DSVTSTFSKLREQ, from the internal region of the protein sequence according to NP_000030.1.

Peptide Sequence C-DSVTSTFSKLREQ

Purification Method Purified from goat serum by ammonium sulphate precipitation followed by antigen affinity chromatography using the immunizing peptide.

Shipping Instructions Refrigerated

Predicted Species	Human
Reactive Species	Human
Human Gene ID	335
Product Grade	https://prod-vector-labs-pimcore-assets.s3.us-east-1.amazonaws.com/assets/products/image/elite_medium.png
IHC Results	Paraffin embedded Human Kidney and Placenta. Recommended concentration: 5µg/ml.
ELISA	
Detection Limit	Antibody detection limit dilution 1:4000.
Western Blot	Approx 28kDa band observed in Human Liver lysates (calculated MW of 30.8kDa according to NP_000030.1). Recommended concentration: 0.5-2µg/ml. Primary incubation was 1 hour.
Application Type	Pep-ELISA, WB, IHC

DOCUMENTS

- [Data Sheet](#)

GALLERY IMAGES

