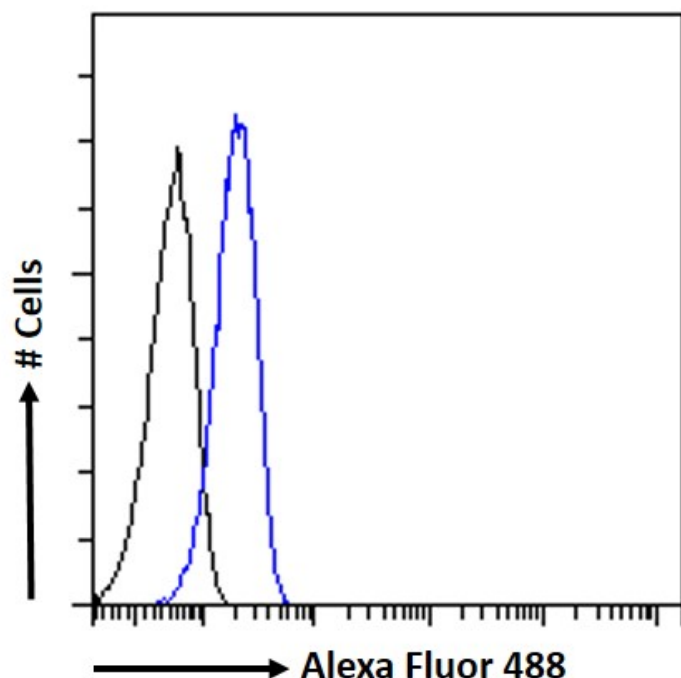


# GOAT ANTI-APOA1BP ANTIBODY

SKU: EB08747



## SPECIFICATIONS

**Formulation** Supplied at 0.5 mg/ml in Tris saline, 0.02% sodium azide, pH7.3 with 0.5% bovine serum albumin.

**Unit Size** 100 µg

**Storage Instructions** Aliquot and store at -20°C. Minimize freezing and thawing.

**Synonym /**

**Alias Names** apoA-I binding protein|MGC119145|MGC119144|MGC119143|AIBP|apolipoprotein A-I binding protein|APOA1BP

**Usage Summary** <strong>Flow Cytometry:</strong> Flow cytometric analysis of A549 cells. Recommended concentration: 10ug/ml.

**Accession ID** NP\_658985.2

**Blocking Peptide** EBP08747

<b>Immunogen</b>	Peptide with sequence PPYPDTECVYRLQ, from the C Terminus of the protein sequence according to NP_658985.2.
<b>Peptide Sequence</b>	PPYPDTECVYRLQ
<b>Purification Method</b>	Purified from goat serum by ammonium sulphate precipitation followed by antigen affinity chromatography using the immunizing peptide.
<b>Shipping Instructions</b>	Refrigerated
<b>Predicted Species</b>	Human, Cow
<b>Reactive Species</b>	Human
<b>Human Gene ID</b>	128240
<b>Mouse Gene ID</b>	246703
<b>Rat Gene ID</b>	295229
<b>Product Grade</b>	<a href="https://prod-vector-labs-pimcore-assets.s3.us-east-1.amazonaws.com/assets/products/image/elite_medium.png">https://prod-vector-labs-pimcore-assets.s3.us-east-1.amazonaws.com/assets/products/image/elite_medium.png</a>
<b>ELISA Detection Limit</b>	Antibody detection limit dilution 1:1000.
<b>Western Blot</b>	Approx. 27kDa band observed in lysates of cell line A431, and approx. 26kDa in lysates of cell line A549 and in Human Heart lysates (calculated MW of 31.7kDa according to NP_658985.2). Recommended concentration: 3µg/ml. Primary incubation 1 hour at room temperature.
<b>Application Type</b>	Pep-ELISA, WB, FC

## DOCUMENTS

- [Data Sheet](#)

## GALLERY IMAGES

