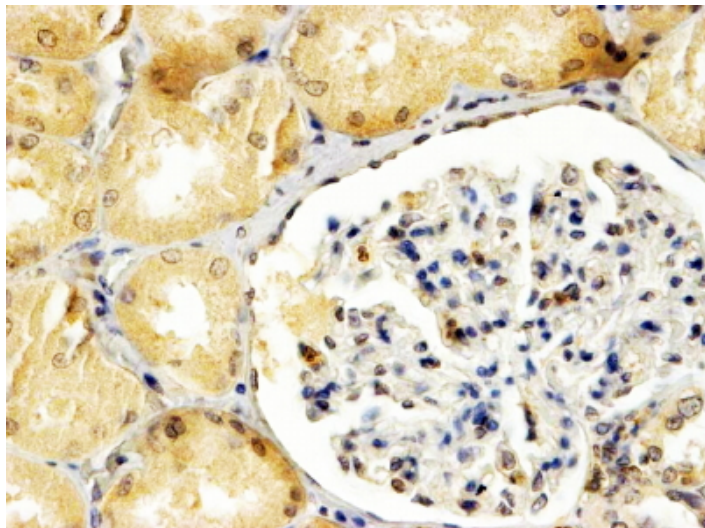


GOAT ANTI-APOBEC3G / ARP9 ANTIBODY

SKU: EB06714



SPECIFICATIONS

Formulation	Supplied at 0.5 mg/ml in Tris saline, 0.02% sodium azide, pH7.3 with 0.5% bovine serum albumin.
Unit Size	100 µg
Storage Instructions	Aliquot and store at -20°C. Minimize freezing and thawing.
Synonym / Alias Names	phorbolin-like protein MDS019 DNA dC->dU editing enzyme d 494G10.1 bK150C2.7 OTTHUMP00000028911 MDS019 FLJ12740 CEM15 ARP9 HGNC:17357 apolipoprotein B mRNA editing enzyme, catalytic polypeptide-like 3G APOBEC3G
Accession ID	NP_068594.1
Blocking Peptide	EBP06714
Immunogen	Peptide with sequence C-SKWRKLHRDQE, from the internal region of the protein sequence according to NP_068594.1.
Peptide Sequence	C-SKWRKLHRDQE
Purification Method	Purified from goat serum by ammonium sulphate precipitation followed by antigen affinity chromatography using the immunizing peptide.
Shipping Instructions	Refrigerated
Predicted Species	Human

Reactive Species	Human
Human Gene ID	60489
Product Grade	https://prod-vector-labs-pimcore-assets.s3.us-east-1.amazonaws.com/assets/products/image/elite_medium.png
IHC Results	In paraffin embedded Human Kidney shows weak cytoplasm staining and stronger nuclear staining in a selection of glomerular cells. Also nuclear membrane staining elsewhere. Recommended concentration, 1-2µg/ml.
ELISA	
Detection Limit	Antibody detection limit dilution 1:64000.
Application Type	Pep-ELISA, IHC

DOCUMENTS

- [Data Sheet](#)

GALLERY IMAGES

