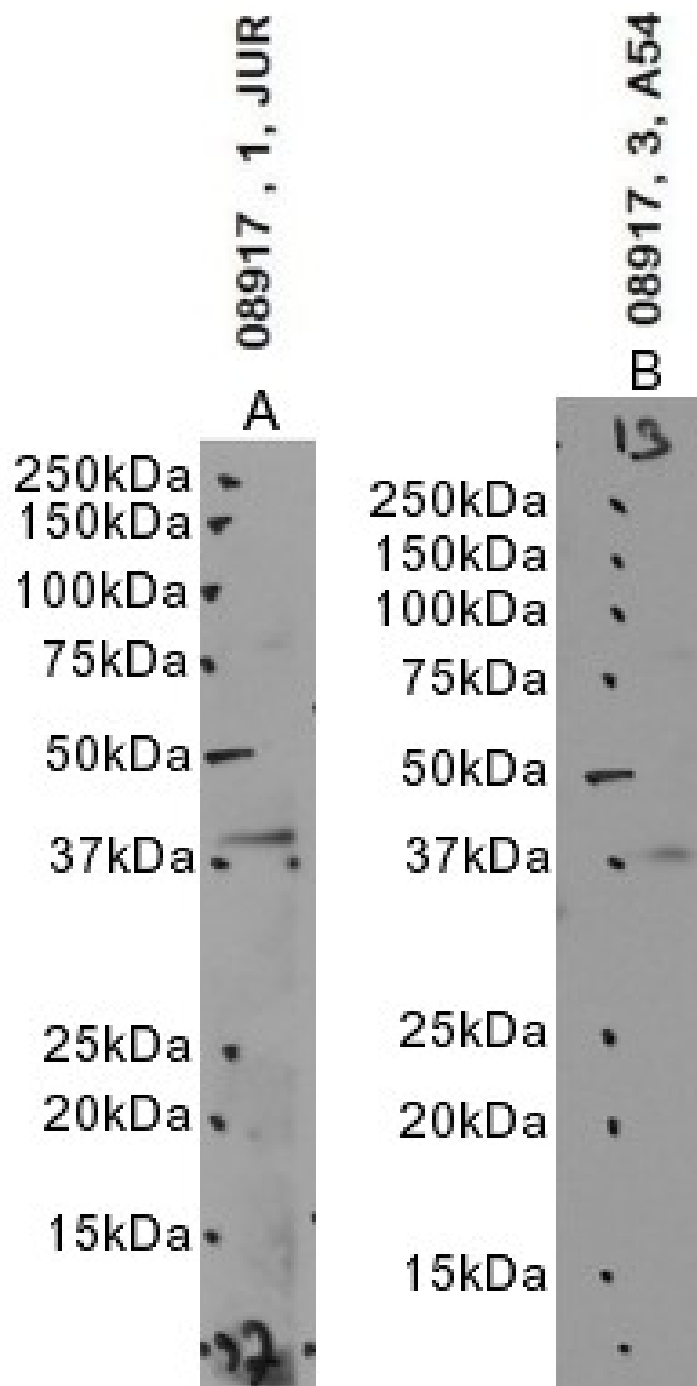


GOAT ANTI-APOL3 ANTIBODY

SKU: EB08917



SPECIFICATIONS

Formulation	Supplied at 0.5 mg/ml in Tris saline, 0.02% sodium azide, pH7.3 with 0.5% bovine serum albumin.
Unit Size	100 µg
Storage Instructions	Aliquot and store at -20°C. Minimize freezing and thawing.
Synonym / Alias Names	apolipoprotein L3 apolipoprotein L-III TNF-inducible protein CG12-1 OTTHUMP00000028913 CG12-1 APOLIII apolipoprotein L, 3 APOL3
Usage Summary	Immunofluorescence: Strong expression of the protein seen in the cytoplasm of Jurkat cells. Recommended concentration: 10µg/ml. Flow Cytometry: Flow cytometric analysis of Jurkat cells. Recommended concentration: 10ug/ml.
Accession ID	NP_663615.1, NP_055164.1, NP_663616.1; NP_001380516.1; NP_001380534.1
Blocking Peptide	EBP08917
Immunogen	Peptide with sequence ELTQIYQRLNPCHTH, from the C Terminus of the protein sequence according to NP_663615.1, NP_055164.1, NP_663616.1; NP_001380516.1; NP_001380534.1.
Product Comments	This antibody is expected to recognize isoforms 1 -5.
Peptide Sequence	ELTQIYQRLNPCHTH
Purification Method	Purified from goat serum by ammonium sulphate precipitation followed by antigen affinity chromatography using the immunizing peptide.
Shipping Instructions	Refrigerated
Predicted Species	Human
Reactive Species	Human
Human Gene ID	80833
Product Grade	https://prod-vector-labs-pimcore-assets.s3.us-east-1.amazonaws.com/assets/products/image/elite_medium.png
ELISA Detection Limit	Antibody detection limit dilution 1:1000.
Western Blot	Approx. 38kDa band observed in lysates of cell lines Jurkat and A549 (calculated MW of 36.5kDa according to NP_055164.1). Recommended concentration: 1-3µg/ml. Primary incubation 1 hour at room temperature.
Application Type	Pep-ELISA, WB, FC, IF

DOCUMENTS

- [Data Sheet](#)

GALLERY IMAGES

