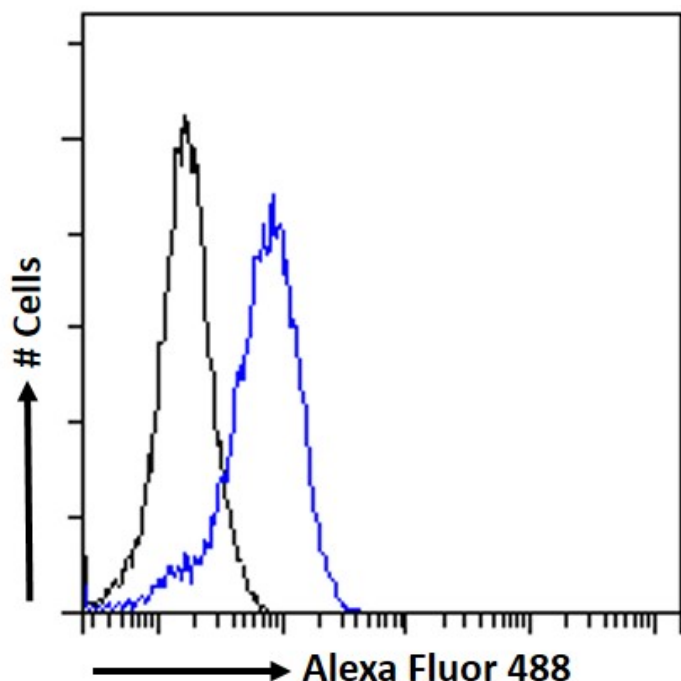


GOAT ANTI-APOLD1 / VERGE ANTIBODY

SKU: EB08772



SPECIFICATIONS

Formulation Supplied at 0.5 mg/ml in Tris saline, 0.02% sodium azide, pH7.3 with 0.5% bovine serum albumin.

Unit Size 100 µg

Storage Instructions Aliquot and store at -20°C. Minimize freezing and thawing.

Synonym /

Alias VERGE|FLJ25138|DKFZP434F0318|apolipoprotein L domain containing 1|APOLD1

Names

Usage Summary Flow Cytometry: Flow cytometric analysis of A431 cells. Recommended concentration: 10ug/ml.

Accession ID NP_110444.3; NP_001123887.1

Blocking Peptide EBP08772

Immunogen	Peptide with sequence C-KSSRGHDLKISADQ, from the C Terminus of the protein sequence according to NP_110444.3; NP_001123887.1.
Peptide Sequence	C-KSSRGHDLKISADQ
Purification Method	Purified from goat serum by ammonium sulphate precipitation followed by antigen affinity chromatography using the immunizing peptide.
Shipping Instructions	Refrigerated
Predicted Species	Human
Reactive Species	Human
Human Gene ID	81575
Product Grade	https://prod-vector-labs-pimcore-assets.s3.us-east-1.amazonaws.com/assets/products/image/elite_medium.png
ELISA Detection Limit	Antibody detection limit dilution 1:2000.
Western Blot	Approx. 35kDa band observed in lysates of cell lines A431, Jurkat and U251 (calculated MW of 30.5kDa according to Human NP_001123887.1). This molecular weight is routinely observed by other sources. Recommended concentration: 0.5-2ug/ml. Primary incubation 1 hour at room temperature.
Application Type	Pep-ELISA, WB, FC

DOCUMENTS

- [Data Sheet](#)

GALLERY IMAGES

