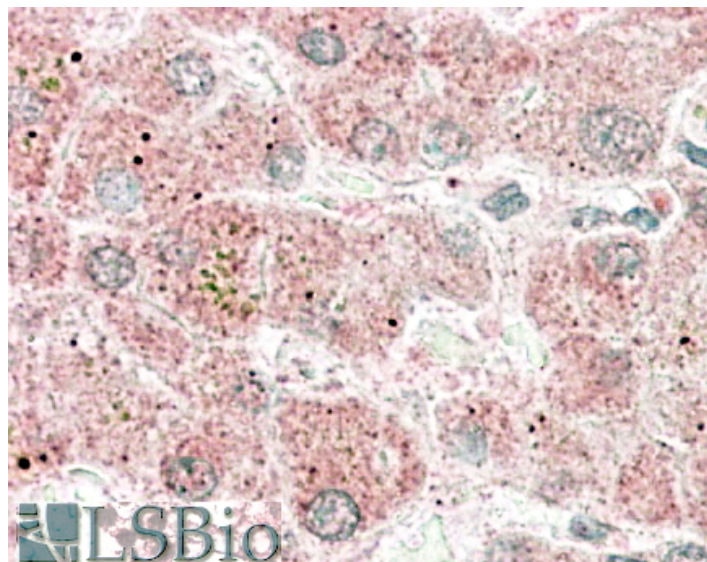


# GOAT ANTI-APOLIPOPROTEIN F ANTIBODY

**SKU:** EB08761



## SPECIFICATIONS

**Formulation** Supplied at 0.5 mg/ml in Tris saline, 0.02% sodium azide, pH7.3 with 0.5% bovine serum albumin.

**Unit Size** 100 µg

**Storage Instructions** Aliquot and store at -20°C. Minimize freezing and thawing.

**Synonym /**

**Alias** Apolipoprotein F|APOF|Apo-F|DKFZp781G18150|MGC22520

**Names**

**Accession ID** NP\_001629.1

**Blocking Peptide** EBP08761

**Immunogen** Peptide with sequence C-KSYDLDPGAGSLE, from the C Terminus of the protein sequence according to NP\_001629.1.

**Peptide Sequence** C-KSYDLDPGAGSLE

**Purification Method** Purified from goat serum by ammonium sulphate precipitation followed by antigen affinity chromatography using the immunizing peptide.

**Shipping Instructions** Refrigerated

<b>Predicted Species</b>	Human
<b>Reactive Species</b>	Human
<b>Human Gene ID</b>	319
<b>Product Grade</b>	<a href="https://prod-vector-labs-pimcore-assets.s3.us-east-1.amazonaws.com/assets/products/image/elite_medium.png">https://prod-vector-labs-pimcore-assets.s3.us-east-1.amazonaws.com/assets/products/image/elite_medium.png</a>
<b>IHC Results</b>	In paraffin embedded Human Liver shows staining of droplets in the cytoplasm of hepatocytes. Recommended concentration, 2.5-3.8µg/ml.
<b>ELISA</b>	
<b>Detection Limit</b>	Antibody detection limit dilution 1:32000.
<b>Western Blot</b>	Approx. 35kDa band observed in Human Liver lysates (calculated MW of 35.4kDa according to NP_001629.1). Recommended concentration: 0.3-1µg/ml.
<b>Application Type</b>	Pep-ELISA, WB, IHC

## DOCUMENTS

- [Data Sheet](#)

## GALLERY IMAGES

