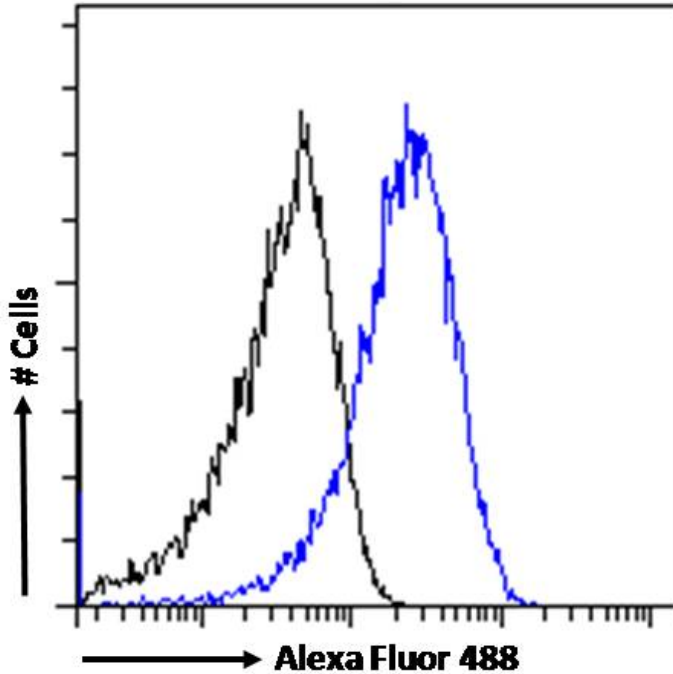


GOAT ANTI-ARF1 (VARIANTS 1-4) ANTIBODY

SKU: EB07557



SPECIFICATIONS

Formulation Supplied at 0.5 mg/ml in Tris saline, 0.02% sodium azide, pH7.3 with 0.5% bovine serum albumin.

Unit Size 100 µg

Storage Instructions Aliquot and store at -20°C. Minimize freezing and thawing.

Synonym /

Alias Names ADP ribosylation factor 1|ARF 1|ADP-ribosylation factor 1|ARF1

Usage Summary Flow Cytometry: Flow cytometric analysis of A431 cells. Recommended concentration: 10µg/ml.

Accession ID NP_001019397.1; NP_001649.1; NP_001019398.1; NP_001019399.1

Blocking Peptide EBP07557

Immunogen Peptide with sequence C-EGLDWLSNQLRNQK, from the C Terminus of the protein sequence according to NP_001019397.1; NP_001649.1; NP_001019398.1; NP_001019399.1.

Product Comments	This antibody is expected to recognize all four reported isoforms.
Peptide Sequence	C-EGLDWLSNQLRNQK
Purification Method	Purified from goat serum by ammonium sulphate precipitation followed by antigen affinity chromatography using the immunizing peptide.
Shipping Instructions	Refrigerated
Predicted Species	Human, Mouse, Rat, Dog
Reactive Species	Human, Mouse, Rat, Dog
Human Gene ID	375, 376
Mouse Gene ID	11840
Rat Gene ID	64310
Product Grade	https://prod-vector-labs-pimcore-assets.s3.us-east-1.amazonaws.com/assets/products/image/elite_medium.png
ELISA Detection Limit	Antibody detection limit dilution 1:8000.
Western Blot	Approx 18kDa band observed in lysates of cell lines A431, HeLa, MCF7, NIH3T3, KNRK and MDCK (calculated MW of 20.7kDa according to Human NP_001649.1, Mouse NP_031502.1 and Rat NP_071963.1). Recommended concentration: 0.3-1µg/ml. Primary incubation 1 hour at room temperature.
Application Type	Pep-ELISA, WB, FC

DOCUMENTS

- [Data Sheet](#)

GALLERY IMAGES

