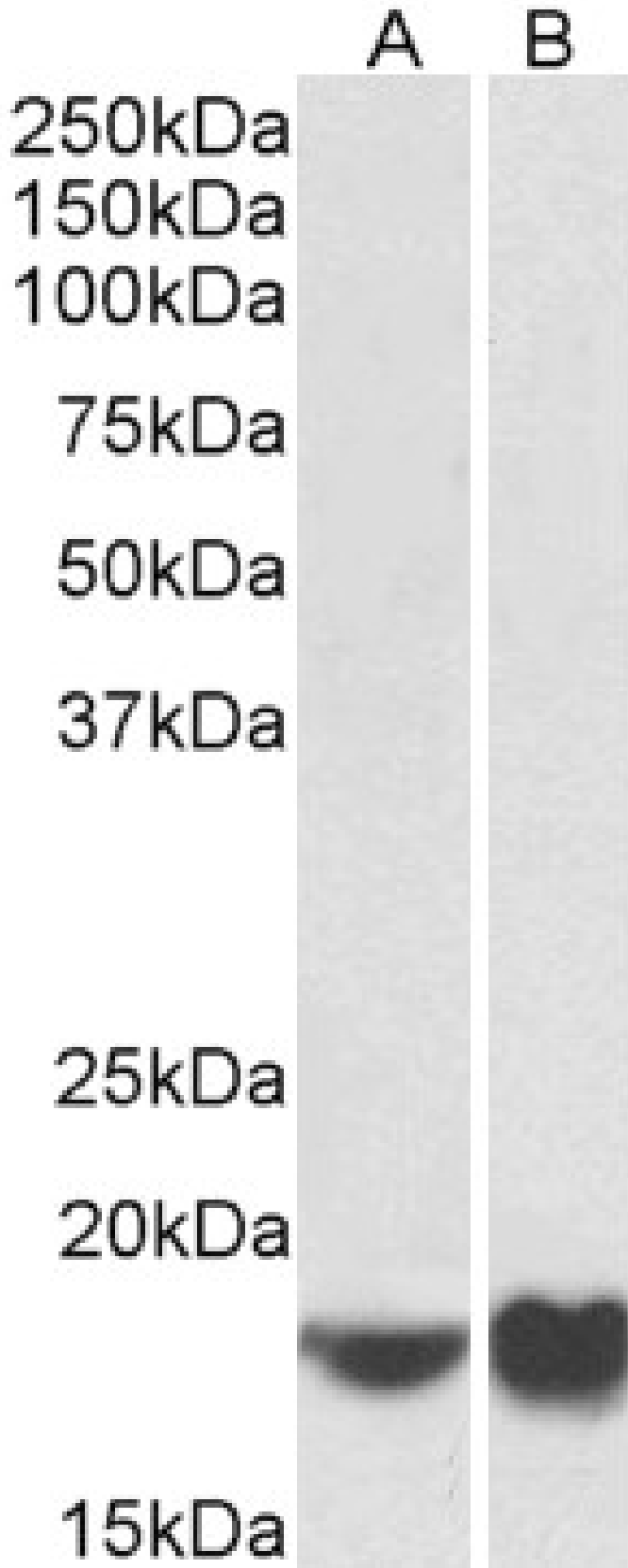


GOAT ANTI-ARF4 (AA137-150) ANTIBODY

SKU: EB11622



SPECIFICATIONS

Formulation	Supplied at 0.5 mg/ml in Tris saline, 0.02% sodium azide, pH7.3 with 0.5% bovine serum albumin.
Unit Size	100 µg
Storage Instructions	Aliquot and store at -20°C. Minimize freezing and thawing.
Synonym / Alias Names	OTTHUMP00000213211 OTTHUMP00000213142 OTTHUMP00000213140 ARF4 ARF2 ADP-ribosylation factor 4 ADP-ribosylation factor 2
Accession ID	NP_001651.1
Blocking Peptide	EBP11622
Immunogen	Peptide with sequence C-SEMTDKLGLQSLRN, from the internal region of the protein sequence according to NP_001651.1.
Peptide Sequence	C-SEMTDKLGLQSLRN
Purification Method	Purified from goat serum by ammonium sulphate precipitation followed by antigen affinity chromatography using the immunizing peptide.
Shipping Instructions	Refrigerated
Predicted Species	Human, Mouse, Rat, Pig, Cow
Reactive Species	Human, Mouse
Human Gene ID	378
Mouse Gene ID	11843
Rat Gene ID	79120
Product Grade	https://prod-vector-labs-pimcore-assets.s3.us-east-1.amazonaws.com/assets/products/image/elite_medium.png
IHC Results	Paraffin embedded Human Thymus. Recommended concentration: 5µg/ml.
ELISA Detection Limit	Antibody detection limit dilution 1:128000.
Western Blot	Approx 19kDa band observed in lysates of cell lines NIH3T3 and HeLa (calculated MW of 20.5kDa according to Human NP_001651.1 and 20.4kDa according to Mouse NP_031505.1). Recommended concentration: 0.3-1µg/ml. Primary incubation 1 hour at room temperature.
Application Type	Pep-ELISA, WB, IHC

DOCUMENTS

- [Data Sheet](#)

GALLERY IMAGES

