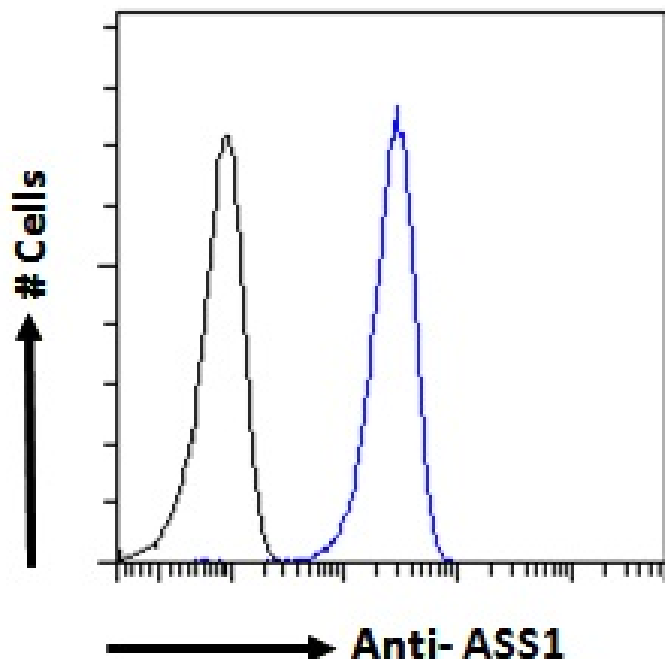


GOAT ANTI-ARGININOSUCCINATE SYNTHETASE 1 ANTIBODY

SKU: EB07697



SPECIFICATIONS

Formulation Supplied at 0.5 mg/ml in Tris saline, 0.02% sodium azide, pH7.3 with 0.5% bovine serum albumin.

Unit Size 100 µg

Storage Instructions Aliquot and store at -20°C. Minimize freezing and thawing.

Synonym / Alias Names citrulline-aspartate ligase|argininosuccinate synthetase 1|citrulline--aspartate ligase|CTLN1|ASS1|ASS|Argininosuccinate synthetase 1

Usage Summary **Immunofluorescence:** Strong expression of the protein seen in the cytoplasm of HeLa cells. Recommended concentration: 10µg/ml. **Flow Cytometry:** Flow cytometric analysis of A431 cells. Recommended concentration: 10ug/ml.

Accession ID NP_000041.2; NP_446464.1

Blocking Peptide EBP07697

Immunogen	Peptide with sequence C-ENPKNQAPPGLYTKTQD, from the internal region of the protein sequence according to NP_000041.2; NP_446464.1.
Product Comments	The variants represent identical protein (NP_000041.2 and NP_446464.1).
Peptide Sequence	C-ENPKNQAPPGLYTKTQD
Purification Method	Purified from goat serum by ammonium sulphate precipitation followed by antigen affinity chromatography using the immunizing peptide.
Shipping Instructions	Refrigerated
Predicted Species	Human, Mouse, Rat, Dog, Cow
Reactive Species	Human, Mouse, Rat
Human Gene ID	445
Mouse Gene ID	11898
Rat Gene ID	25698
Product Grade	https://prod-vector-labs-pimcore-assets.s3.us-east-1.amazonaws.com/assets/products/image/elite_plus_medium.png
IHC Results	In paraffin embedded Human Kidney shows textured cytoplasm staining in PCT. Recommended concentration: 2-4µg/ml. Paraffin embedded Human Liver. Recommended concentration: 2.5µg/ml.
ELISA Detection Limit	Antibody detection limit dilution 1:64000.
Western Blot	Approx 45kDa band observed in lysates of cell lines A431 and NIH3T3 and approx.48kDa in Human and Rat Kidney and in Mouse Liver lysates (calculated MW of 46.5kDa according to Human NP_000041.2 and Rat NP_037289.1, and 46.6kDa according to Mouse NP_031520.1). Recommended concentration: 0.03-1µg/ml. Primary incubation 1 hour at room temperature.
Application Type	Pep-ELISA, WB, IF, FC, IHC

SELECTED REFERENCES

[{"pmid": 18948083, "intro": "**This antibody has been successfully used in WB and IP on Cow:**", "title": "Phosphorylation of argininosuccinate synthase by protein kinase A.", "author": "Corbin KD, Pendleton LC, Solomonson LP, Eichler DC.", "journal": "Biochem Biophys Res Commun. 2008 Dec 26;377(4):1042-6."}]

DOCUMENTS

- [Data Sheet](#)

GALLERY IMAGES

