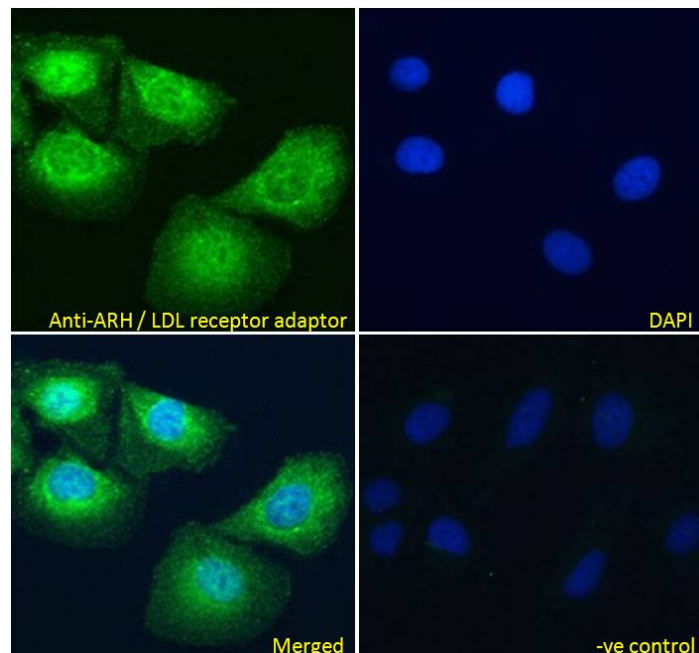


GOAT ANTI-ARH / LDL RECEPTOR ADAPTOR ANTIBODY

SKU: EB06017



SPECIFICATIONS

Formulation Supplied at 0.5 mg/ml in Tris saline, 0.02% sodium azide, pH7.3 with 0.5% bovine serum albumin.

Unit Size 100 µg

Storage Instructions Aliquot and store at -20°C. Minimize freezing and thawing.

Synonym / Alias Names ARH|LDL receptor adaptor protein|ARH2|FHCB1|FHCB2|MGC34705|DKFZp586D0624|low density lipoprotein receptor adaptor protein 1|RP11-70P17.2|autosomal recessive hypercholesterolemia protein

Usage Summary Immunofluorescence: Strong expression of the protein seen in the cytoplasm of U2OS and A431 cells. Recommended concentration: 10µg/ml.

Accession ID NP_056442.2

Blocking Peptide EBP06017

Immunogen Peptide with sequence DALKSAGRALIRS-C, from the N Terminus of the protein sequence according to NP_056442.2.

Peptide Sequence	DALKSAGRALIRS-C
Purification Method	Purified from goat serum by ammonium sulphate precipitation followed by antigen affinity chromatography using the immunizing peptide.
Shipping Instructions	Refrigerated
Predicted Species	Human, Mouse, Rat, Dog, Cow
Reactive Species	Human
Human Gene ID	26119
Product Grade	https://prod-vector-labs-pimcore-assets.s3.us-east-1.amazonaws.com/assets/products/image/elite_medium.png
ELISA Detection Limit	Antibody detection limit dilution 1:16000.
Application Type	Pep-ELISA, IF

DOCUMENTS

- [Data Sheet](#)

GALLERY IMAGES

