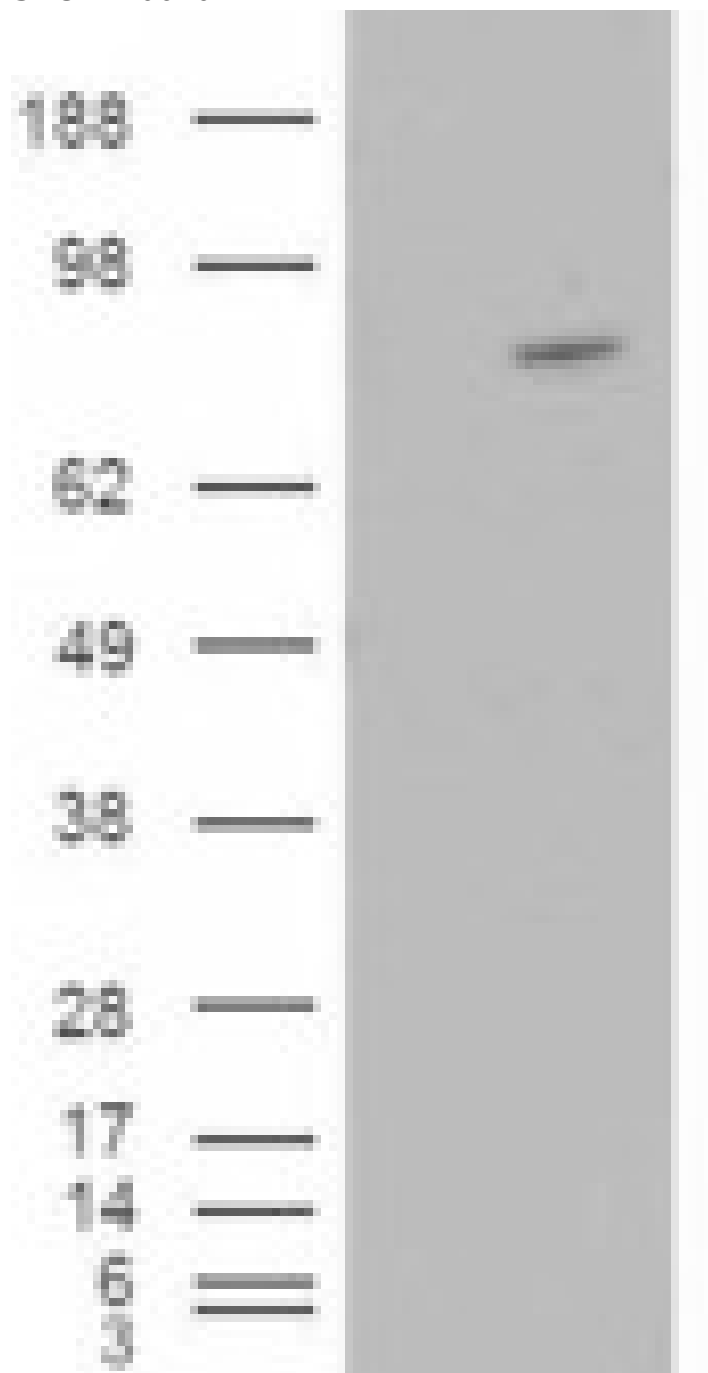


## GOAT ANTI-ARHGEF4 ANTIBODY

**SKU:** EB06107



## SPECIFICATIONS

<b>Formulation</b>	Supplied at 0.5 mg/ml in Tris saline, 0.02% sodium azide, pH7.3 with 0.5% bovine serum albumin.
<b>Unit Size</b>	100 µg
<b>Storage</b>	
<b>Instructions</b>	Aliquot and store at -20°C. Minimize freezing and thawing.
<b>Synonym / Alias Names</b>	Rho guanine nucleotide exchange factor 4 ASEF1 APC-stimulated guanine nucleotide exchange factor DKFZp434G2016 KIAA1112 STM6 GEF4 ASEF Rho guanine nucleotide exchange factor (GEF) 4 ARHGEF4
<b>Accession ID</b>	NP_056135.2; NP_127462.1
<b>Blocking Peptide</b>	EBP06107
<b>Immunogen</b>	Peptide with sequence PWEEPAGEKPSCS, from the N Terminus of the protein sequence according to NP_056135.2; NP_127462.1.
<b>Product Comments</b>	This antibody is expected to recognise both reported isoforms (NP_056135.2; NP_127462.1).
<b>Peptide Sequence</b>	PWEEPAGEKPSCS
<b>Purification Method</b>	Purified from goat serum by ammonium sulphate precipitation followed by antigen affinity chromatography using the immunizing peptide.
<b>Shipping Instructions</b>	Refrigerated
<b>Predicted Species</b>	Human
<b>Reactive Species</b>	Human
<b>Human Gene ID</b>	50649
<b>Product Grade</b>	<a href="https://prod-vector-labs-pimcore-assets.s3.us-east-1.amazonaws.com/assets/products/image/elite_medium.png">https://prod-vector-labs-pimcore-assets.s3.us-east-1.amazonaws.com/assets/products/image/elite_medium.png</a>
<b>ELISA Detection Limit</b>	Antibody detection limit dilution 1:32000.
<b>Western Blot</b>	Approx 80kDa band observed in Human Brain lysates and in transfected HEK293 transiently expressing ARHGEF4 (calculated MW of 79.1kDa according to NP_056135.2 and 76.4kDa according to 127462.1). Recommended concentration: 2-4µg/ml.
<b>Application Type</b>	Pep-ELISA, WB

## DOCUMENTS

- [Data Sheet](#)

## GALLERY IMAGES

