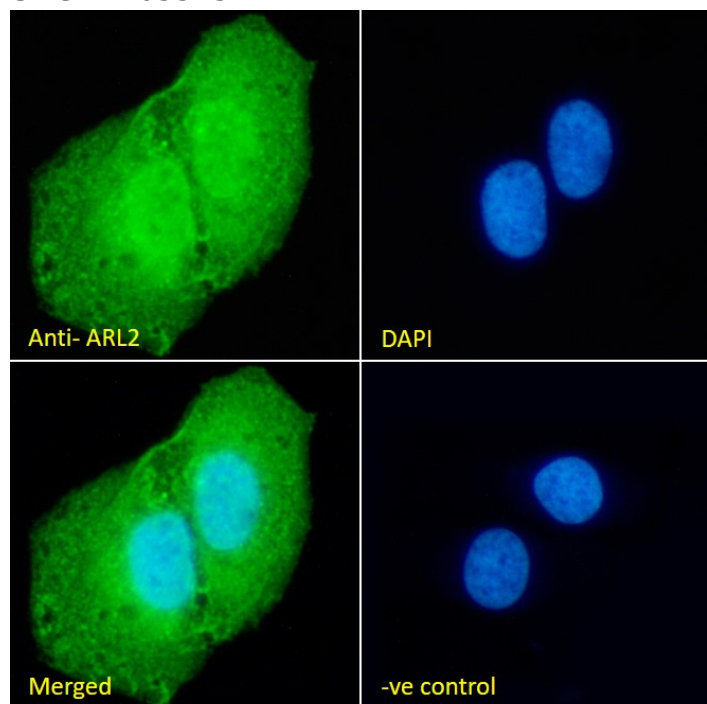


GOAT ANTI-ARL2 ANTIBODY

SKU: EB05545



SPECIFICATIONS

Formulation Supplied at 0.5 mg/ml in Tris saline, 0.02% sodium azide, pH7.3 with 0.5% bovine serum albumin.

Unit Size 100 µg

Storage Instructions Aliquot and store at -20°C. Minimize freezing and thawing.

Synonym /

Alias ADP=ribosylation factor-like 2|ARFL2|ADP-ribosylation factor-like 2|ARL2

Names

Usage Summary **Immunofluorescence:** Strong expression of the protein seen in the cytoplasm and nuclei of U2OS cells. Recommended concentration: 10µg/ml. **Flow Cytometry:** Flow cytometric analysis of A431 cells. Recommended concentration: 10ug/ml.

Accession ID NP_001658.2

Blocking Peptide EBP05545

Immunogen Peptide with sequence C-LDDISSRIFTAD, from the C Terminus of the protein sequence according to NP_001658.2.

Peptide Sequence	C-LDDISSRIFTAD
Purification Method	Purified from goat serum by ammonium sulphate precipitation followed by antigen affinity chromatography using the immunizing peptide.
Shipping Instructions	Refrigerated
Predicted Species	Human, Dog
Reactive Species	Human
Human Gene ID	402
Product Grade	https://prod-vector-labs-pimcore-assets.s3.us-east-1.amazonaws.com/assets/products/image/elite_plus_medium.png
ELISA Detection Limit	Antibody detection limit dilution 1:64000.
Western Blot	Approx. 18kDa band observed in lysates of cell line A431 and approx. 20kDa in nuclear lysates of cell line HeLa (calculated MW of 20.9kDa according to NP_001658.2). Recommended concentration: 0.5-1µg/ml. Primary incubation 1 hour at room temperature.
Application Type	Pep-ELISA, WB, IF, FC

DOCUMENTS

- [Data Sheet](#)

GALLERY IMAGES

