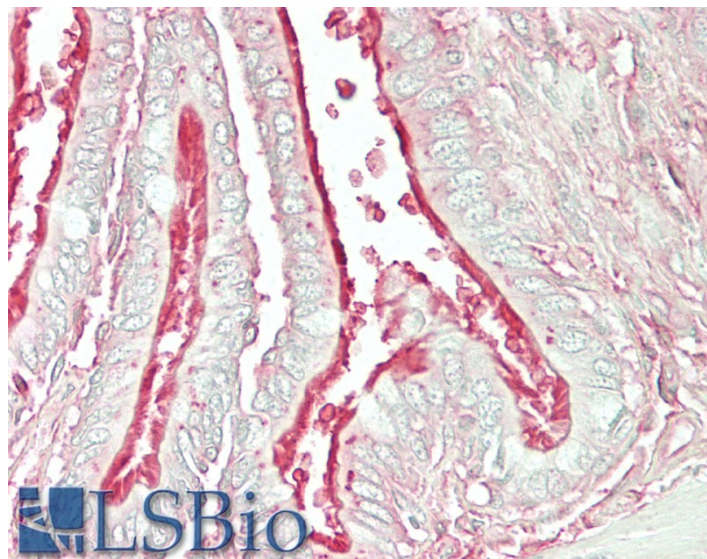


GOAT ANTI-ARL6 / BBS3 (MOUSE) ANTIBODY

SKU: EB10603



SPECIFICATIONS

Formulation Supplied at 0.5 mg/ml in Tris saline, 0.02% sodium azide, pH7.3 with 0.5% bovine serum albumin.

Unit Size 100 µg

Storage Instructions Aliquot and store at -20°C. Minimize freezing and thawing.

Synonym / Alias Names ARL6| ADP-ribosylation factor-like 6| BBS3| 1110018H24Rik| 2210411E14Rik| ADP-ribosylation factor-like protein 6| ADP-ribosylation-like factor homolog ARL6| bardet-Biedl syndrome 3 protein

Accession ID NP_062639.3

Blocking Peptide EBP10603

Immunogen Peptide with sequence C-KPSNAQSQDIVPT, from the internal region of the protein sequence according to NP_062639.3.

Product Comments Reported variants represent identical protein: NP_816931.1, NP_115522.1

Peptide Sequence C-KPSNAQSQDIVPT

Purification Method Purified from goat serum by ammonium sulphate precipitation followed by antigen affinity chromatography using the immunizing peptide.

Shipping Instructions	Refrigerated
Predicted Species	Mouse, Rat, Cow, Dog
Reactive Species	Human
Mouse Gene ID	56297
Product Grade	https://prod-vector-labs-pimcore-assets.s3.us-east-1.amazonaws.com/assets/products/image/elite_medium.png
IHC Results	Paraffin embedded Human Lung. Recommended concentration: 5µg/ml.
ELISA Detection Limit	Antibody detection limit dilution 1:16000.
Western Blot	Preliminary experiments gave an approx 33kDa band in Mouse Brain lysates after 1µg/ml antibody staining. Please note that currently we cannot find an explanation in the literature for the band we observe given the calculated size of 21.0kDa according to NP_062639.3. The 33kDa band was successfully blocked by incubation with the immunizing peptide.
Application Type	Pep-ELISA, IHC

DOCUMENTS

- [Data Sheet](#)

GALLERY IMAGES

