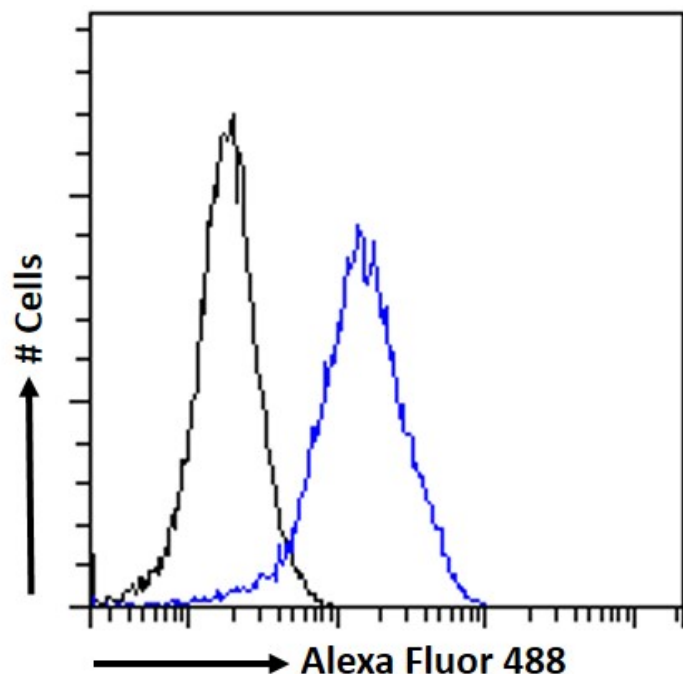


GOAT ANTI-ARP1 HOMOLOG A ANTIBODY

SKU: EB06349



SPECIFICATIONS

Formulation Supplied at 0.5 mg/ml in Tris saline, 0.02% sodium azide, pH7.3 with 0.5% bovine serum albumin.

Unit Size 100 µg

Storage Instructions Aliquot and store at -20°C. Minimize freezing and thawing.

Synonym / Alias Names ARP1 actin-related protein 1 homolog A, centractin alpha|FLJ55002|FLJ52800|FLJ52695|CTRN1|ARP1 (actin-related protein 1, yeast) homolog A (centractin alpha)|centrosome-associated actin homolog|ARP1, yeast homolog A|centractin alpha|actin-RPV|ARP1 actin-related protein 1 homolog A, centractin alpha (yeast)|ARP1|ACTR1A

Usage Summary **Immunofluorescence:** A customer reported cytoplasmic staining on A431 cells at a primary ab concentration of 10ug/ml. **Flow Cytometry:** Flow cytometric analysis of A431 cells. Recommended concentration: 10ug/ml.

Accession ID NP_005727.1

Blocking Peptide EBP06349

Immunogen	Peptide with sequence C-YEEDGARSIHRT, from the C Terminus of the protein sequence according to NP_005727.1.
Product Comments	This epitope was selected to minimise the chance of cross-reactivity with ACTR1B (YEEDGSRAIHRKT).
Peptide Sequence	C-YEEDGARSIHRT
Purification Method	Purified from goat serum by ammonium sulphate precipitation followed by antigen affinity chromatography using the immunizing peptide.
Shipping Instructions	Refrigerated
Predicted Species	Human, Mouse, Rat, Dog, Pig, Cow
Reactive Species	Human, Mouse, Rat, Dog
Human Gene ID	10121
Mouse Gene ID	54130
Product Grade	https://prod-vector-labs-pimcore-assets.s3.us-east-1.amazonaws.com/assets/products/image/elite_medium.png
ELISA Detection Limit	Antibody detection limit dilution 1:64000.
Western Blot	Approx. 42-45kDa band observed in lysates of cell lines A431 HEK293, HeLa, MCF7, NIH3T3, KNRK and MDCK, and in preliminary testing of Human and Mouse Adrenal gland and Mouse Stomach lysate (calculated MW of 42.6kDa according to Human NP_005727.1, Mouse : NP_058556.1, Rat NP_001099834.1 and Dog NP_001003164.1). Recommended concentration: 0.1-2µg/ml. Primary incubation 1 hour at room temperature.
Application Type	Pep-ELISA, WB, FC

DOCUMENTS

- [Data Sheet](#)

GALLERY IMAGES

