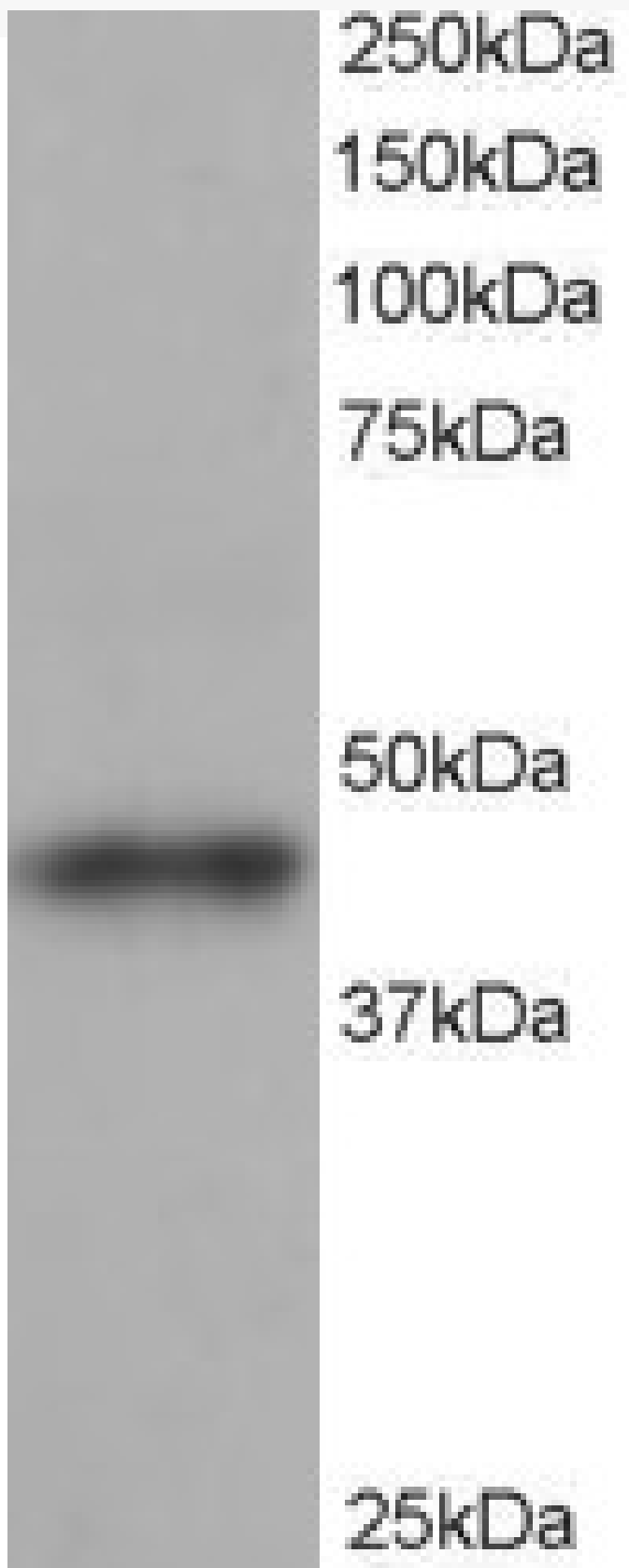


GOAT ANTI-ARP1 HOMOLOG B ANTIBODY

SKU: EB06350



SPECIFICATIONS

Formulation Supplied at 0.5 mg/ml in Tris saline, 0.02% sodium azide, pH7.3 with 0.5% bovine serum albumin.

Unit Size 100 µg

Storage Instructions Aliquot and store at -20°C. Minimize freezing and thawing.

Synonym / Alias Names ARP1 actin-related protein 1 homolog B, centractin beta|ARP1 (actin-related protein 1, yeast) homolog B (centractin beta)|ARP1, yeast homolog B|centractin beta|PC3|ARP1 actin-related protein 1 homolog B, centractin beta (yeast)|CTRN2|ARP1B|ACTR1B

Accession ID NP_005726.1

Blocking Peptide EBP06350

Immunogen Peptide with sequence C-YEEDGSRAIHRKT, from the C Terminus of the protein sequence according to NP_005726.1.

Product Comments This epitope was selected to minimise the chance of cross-reactivity with ACTR1A (YEEDGARSIRHKT).

Peptide Sequence C-YEEDGSRAIHRKT

Purification Method Purified from goat serum by ammonium sulphate precipitation followed by antigen affinity chromatography using the immunizing peptide.

Shipping Instructions Refrigerated

Predicted Species Human, Mouse, Rat, Dog, Cow

Reactive Species Human

Human Gene ID 10120

Mouse Gene ID 226977

Product Grade https://prod-vector-labs-pimcore-assets.s3.us-east-1.amazonaws.com/assets/products/image/elite_medium.png

IHC Results In paraffin embedded Human Uterus shows fibrillar staining of cytoplasm in endometrial cells. Recommended concentration, 3-5µg/ml.

ELISA Detection Limit Antibody detection limit dilution 1:128000.

Western Blot Approx 45kDa band observed in Human Heart and Brain lysates (predicted MW of 42.3kDa according to NP_005726.1). Recommended for use at 0.5-2µg/ml.

Application Type Pep-ELISA, WB, IHC

DOCUMENTS

- [Data Sheet](#)

GALLERY IMAGES

