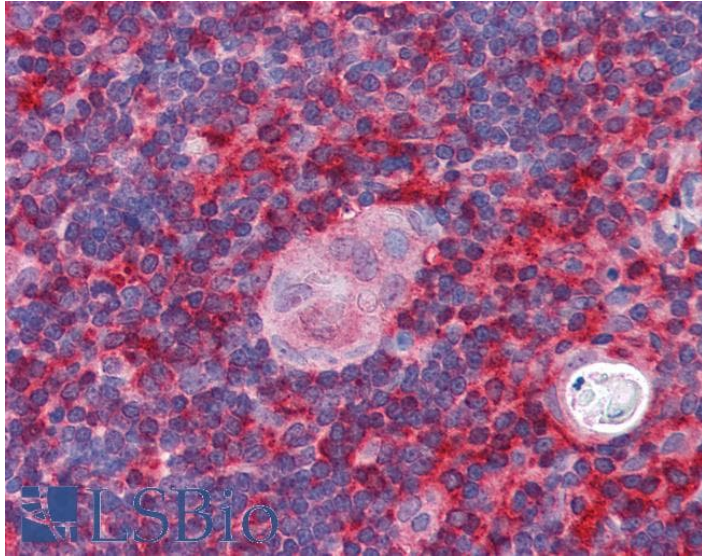




# GOAT ANTI-ARP2/3 SUBUNIT 1B ANTIBODY

**SKU:** EB05435



## SPECIFICATIONS

<b>Formulation</b>	Supplied at 0.5 mg/ml in Tris saline, 0.02% sodium azide, pH7.3 with 0.5% bovine serum albumin.
<b>Unit Size</b>	100 µg
<b>Storage</b>	Aliquot and store at -20°C. Minimize freezing and thawing.
<b>Instructions</b>	
<b>Synonym / Alias Names</b>	OTTHUMP00000206020 actin related protein 2/3 complex, subunit 1A (41 kD) ARP2/3 protein complex subunit p41 p41-ARC p40-ARC ARC41 actin related protein 2/3 complex, subunit 1B, 41kDa ARPC1B
<b>Accession ID</b>	NP_005711.1
<b>Blocking Peptide</b>	EBP05435
<b>Immunogen</b>	Peptide with sequence AYHSFLVEPISCH, from the N Terminus of the protein sequence according to NP_005711.1.
<b>Peptide Sequence</b>	AYHSFLVEPISCH
<b>Purification Method</b>	Purified from goat serum by ammonium sulphate precipitation followed by antigen affinity chromatography using the immunizing peptide.
<b>Shipping Instructions</b>	Refrigerated



<b>Predicted Species</b>	Human, Mouse, Rat, Dog, Pig, Cow
<b>Reactive Species</b>	Human
<b>Human Gene ID</b>	10095
<b>Product Grade</b>	<a href="https://prod-vector-labs-pimcore-assets.s3.us-east-1.amazonaws.com/assets/products/image/elite_medium.png">https://prod-vector-labs-pimcore-assets.s3.us-east-1.amazonaws.com/assets/products/image/elite_medium.png</a>
<b>IHC Results</b>	Paraffin embedded Human Thymus. Recommended concentration: 5µg/ml.
<b>ELISA</b>	
<b>Detection Limit</b>	Antibody detection limit dilution 1:32000.
<b>Western Blot</b>	Approx 37kDa band observed in Human Liver lysates (calculated MW of 40.9kDa according to NP_005711). Recommended concentration: 2-4µg/ml. A minor band of unknown identity was also consistently observed at 28kDa.
<b>Application Type</b>	Pep-ELISA, WB, IHC

## DOCUMENTS

- [Data Sheet](#)

## GALLERY IMAGES



[www.everestbiotech.com](http://www.everestbiotech.com)

Email: [customerservice@vectorlabs.com](mailto:customerservice@vectorlabs.com)

Telephone: [\(650\) 697-3600](tel:(650)697-3600)

