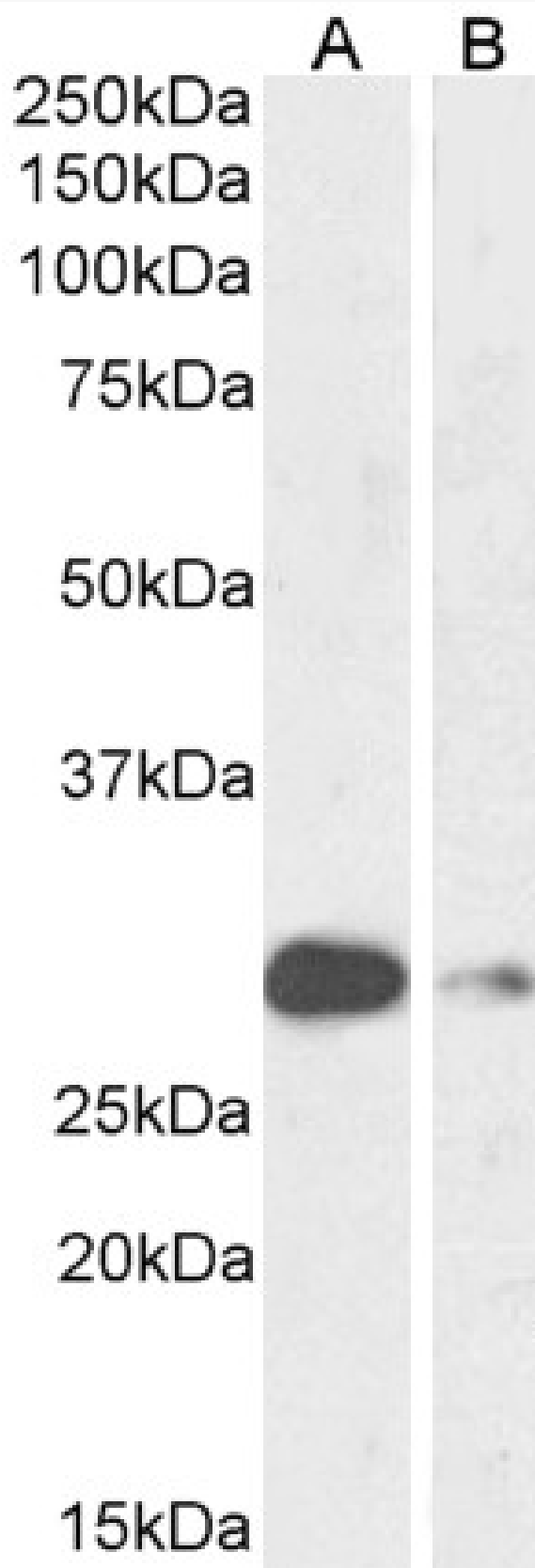


GOAT ANTI-ASCL1 (AA79-91) ANTIBODY

SKU: EB12072



SPECIFICATIONS

Formulation	Supplied at 0.5 mg/ml in Tris saline, 0.02% sodium azide, pH7.3 with 0.5% bovine serum albumin.
Unit Size	100 µg
Storage Instructions	Aliquot and store at -20°C. Minimize freezing and thawing.
Synonym / Alias Names	class A basic helix-loop-helix protein 46 achaete-scute homolog 1 achaete-scute complex-like 1 achaete scute protein ASH-1 bHLHa46 MASH1 HASH1 ASH1 achaete-scute complex homolog 1 (Drosophila) ASCL1
Usage Summary	Immunofluorescence: Strong expression of the protein seen in the nuclei and cytoplasm of MCF7 and U2OS cells. Recommended concentration: 10µg/ml.
Accession ID	NP_004307.2
Blocking Peptide	EBP12072
Immunogen	Peptide with sequence C-HKSAPKQVKRQRS, from the internal region of the protein sequence according to NP_004307.2.
Peptide Sequence	C-HKSAPKQVKRQRS
Purification Method	Purified from goat serum by ammonium sulphate precipitation followed by antigen affinity chromatography using the immunizing peptide.
Shipping Instructions	Refrigerated
Predicted Species	Human, Cow, Mouse, Rat, Dog
Reactive Species	Human, Mouse, Rat
Human Gene ID	429
Mouse Gene ID	17172
Rat Gene ID	64186
Product Grade	https://prod-vector-labs-pimcore-assets.s3.us-east-1.amazonaws.com/assets/products/image/elite_medium.png
ELISA Detection Limit	Antibody detection limit dilution 1:32000.
Western Blot	Approx 28kDa band observed in Mouse and Rat Lung lysates (calculated MW of 24.7kDa according to Mouse NP_032579.2 and 24.9kDa according to Rat NP_071779) . Recommended concentration: 0.3-1µg/ml.
Application Type	Pep-ELISA, WB, IF

DOCUMENTS

- [Data Sheet](#)

GALLERY IMAGES

