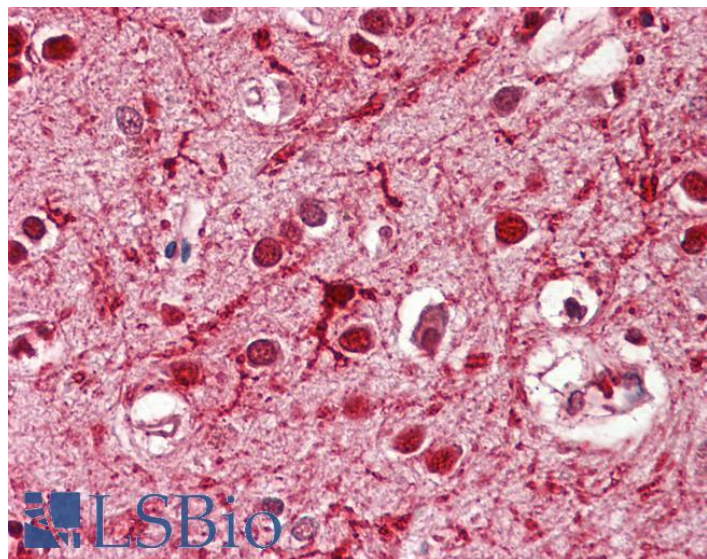


GOAT ANTI-ASCL3 (MOUSE) ANTIBODY

SKU: EB10633



SPECIFICATIONS

Formulation Supplied at 0.5 mg/ml in Tris saline, 0.02% sodium azide, pH7.3 with 0.5% bovine serum albumin.

Unit Size 100 µg

Storage Instructions Aliquot and store at -20°C. Minimize freezing and thawing.

Synonym / Alias Names Ascl3| achaete-scute complex homolog 3 (Drosophila)| MGC129412| MGC129413| Sgn1| bHLHa42| ASH-3| ICRFP703B1614Q5.4| ICRFP703N2430Q5.4| achaete-scute homolog 3| bHLH transcriptional regulator Sgn-1| mASH-3| mASH3

Accession ID NP_064435.1

Blocking Peptide EBP10633

Immunogen Peptide with sequence C-HLPEDYLEKRLSK, from the internal region of the protein sequence according to NP_064435.1.

Peptide Sequence C-HLPEDYLEKRLSK

Purification Method Purified from goat serum by ammonium sulphate precipitation followed by antigen affinity chromatography using the immunizing peptide.

Shipping Instructions Refrigerated

Predicted Species	Human, Mouse, Cow
Reactive Species	Human, Mouse
Human Gene ID	56676
Mouse Gene ID	56787
Product Grade	https://prod-vector-labs-pimcore-assets.s3.us-east-1.amazonaws.com/assets/products/image/elite_medium.png
IHC Results	Paraffin embedded Human Brain (Cortex). Recommended concentration: 3.75µg/ml.
ELISA	
Detection Limit	Antibody detection limit dilution 1:8000.
Western Blot	Approx 23kDa band observed in Mouse Liver lysates (calculated MW of 20.2kDa according to NP_064435.1). Recommended concentration: 0.1-0.3µg/ml. Primary incubation was 1 hour.
Application Type	Pep-ELISA, WB, IHC

DOCUMENTS

- [Data Sheet](#)

GALLERY IMAGES

