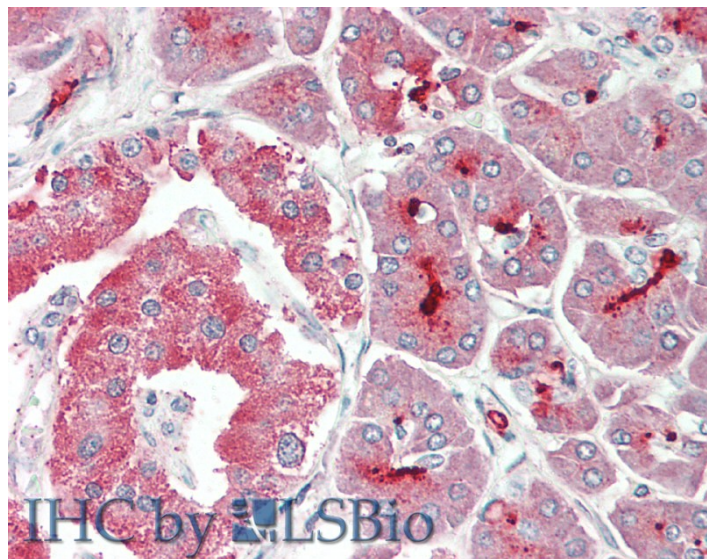


GOAT ANTI-ASIC1 ANTIBODY

SKU: EB12627



SPECIFICATIONS

Formulation	Supplied at 0.5 mg/ml in Tris saline, 0.02% sodium azide, pH7.3 with 0.5% bovine serum albumin.
Unit Size	100 µg
Storage Instructions	Aliquot and store at -20°C. Minimize freezing and thawing.
Synonym / Alias Names	brain sodium channel 2 amiloride-sensitive cation channel 2, neuronal acid-sensing ion channel 1a protein acid-sensing ion channel 1 Cation channel, amiloride-sensitive, neuronal, 2 BNaC2 ASIC ACCN2 acid-sensing (proton-gated) ion channel 1 ASIC1
Accession ID	NP_064423.2; NP_001086.2; NP_001243759.1
Blocking Peptide	EBP12627
Immunogen	Peptide with sequence C-NILPHHPARGT, from the C Terminus of the protein sequence according to NP_064423.2; NP_001086.2; NP_001243759.1.
Product Comments	This antibody is expected to recognize all reported isoforms (NP_064423.2; NP_001086.2; NP_001243759.1).
Peptide Sequence	C-NILPHHPARGT
Purification Method	Purified from goat serum by ammonium sulphate precipitation followed by antigen affinity chromatography using the immunizing peptide.

Shipping Instructions	Refrigerated
Predicted Species	Human, Mouse, Rat, Dog, Pig, Cow
Reactive Species	Human, Mouse
Human Gene ID	41
Mouse Gene ID	11419
Rat Gene ID	79123
Product Grade	https://prod-vector-labs-pimcore-assets.s3.us-east-1.amazonaws.com/assets/products/image/elite_medium.png
IHC Results	Paraffin embedded Human Brain (Cortex) and Pancreas. Recommended concentration: 5µg/ml.
ELISA	
Detection Limit	Antibody detection limit dilution 1:128000.
Western Blot	Approx 70kDa band observed in Mouse fetal Brain lysates (calculated MW of 64.8kDa according to NP_064423.2). Recommended concentration: 0.3-1µg/ml. Primary incubation was 1 hour.
Application Type	Pep-ELISA, WB, IHC

DOCUMENTS

- [Data Sheet](#)

GALLERY IMAGES

