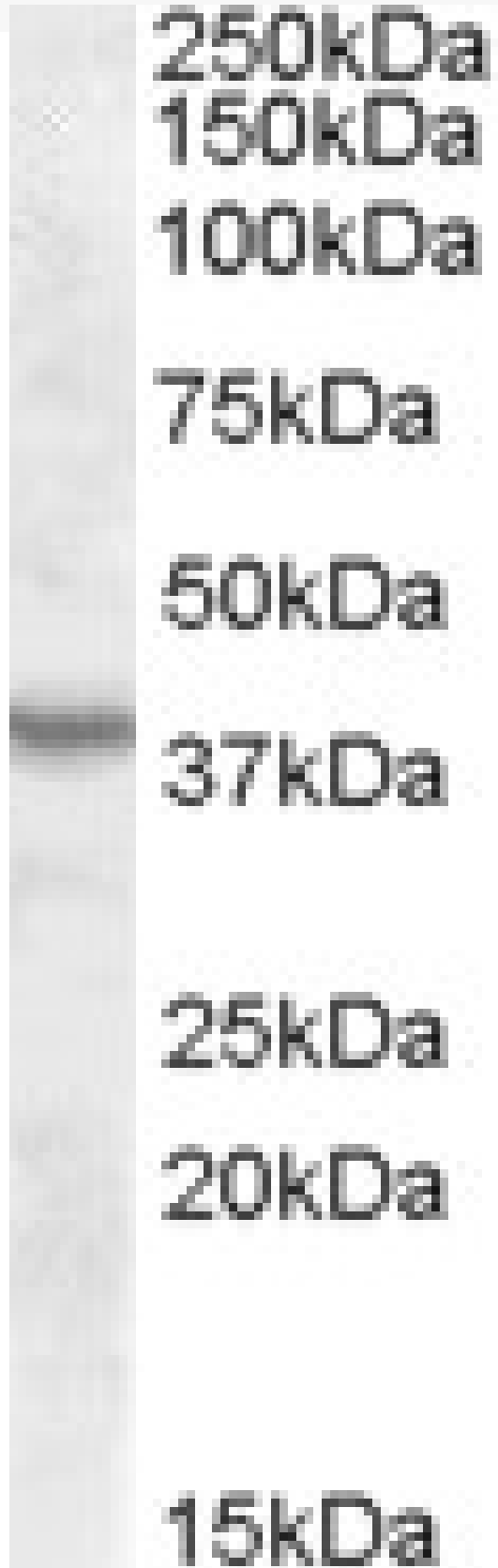


GOAT ANTI-ASNA1 ANTIBODY

SKU: EB08488



SPECIFICATIONS

Formulation	Supplied at 0.5 mg/ml in Tris saline, 0.02% sodium azide, pH7.3 with 0.5% bovine serum albumin.
Unit Size	100 µg
Storage Instructions	Aliquot and store at -20°C. Minimize freezing and thawing.
Synonym / Alias Names	arsA arsenite transporter, ATP-binding, homolog 1 MGC3821 ARSA1 ARSA-I arsA arsenite transporter, ATP-binding, homolog 1 (bacterial) ASNA1
Accession ID	NP_004308.2
Blocking Peptide	EBP08488
Immunogen	Peptide with sequence C-PHEVRGADKVNT, from the internal region of the protein sequence according to NP_004308.2.
Peptide Sequence	C-PHEVRGADKVNT
Purification Method	Purified from goat serum by ammonium sulphate precipitation followed by antigen affinity chromatography using the immunizing peptide.
Shipping Instructions	Refrigerated
Predicted Species	Human, Mouse, Rat, Cow
Reactive Species	Human, Mouse, Rat
Human Gene ID	439
Product Grade	https://prod-vector-labs-pimcore-assets.s3.us-east-1.amazonaws.com/assets/products/image/elite_medium.png
ELISA Detection Limit	Antibody detection limit dilution 1:2000.
Western Blot	Approx 38kDa band observed in Human, Mouse and Rat Kidney lysates (calculated MW of 38.8kDa according to Human NP_004308.2). Recommended concentration: 0.3-1µg/ml.
Application Type	Pep-ELISA, WB

SELECTED REFERENCES

[{"pmid": 24235151, "intro": "", "title": "Gel-based protease proteomics for identifying the novel calpain substrates in dopaminergic neuronal cell.", "author": "Kim C, Yun N, Lee YM, Jeong JY, Baek JY, Song HY, Ju C, Youdim MB, Jin BK, Kim WK, Oh YJ.", "journal": "J Biol Chem. 2013 Dec"}]

20;288(51):36717-32."}]

DOCUMENTS

- [Data Sheet](#)

GALLERY IMAGES

