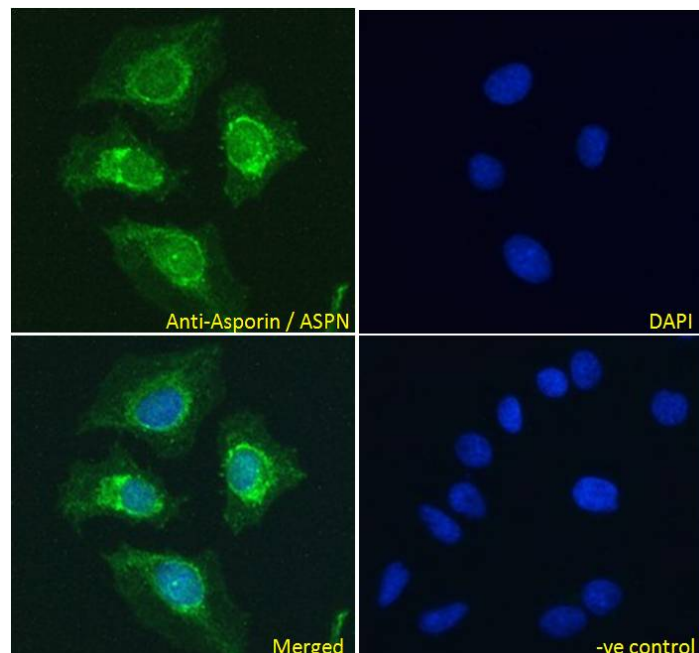


GOAT ANTI-ASPORIN / ASPN ANTIBODY

SKU: EB06670



SPECIFICATIONS

Formulation Supplied at 0.5 mg/ml in Tris saline, 0.02% sodium azide, pH7.3 with 0.5% bovine serum albumin.

Unit Size 100 µg

Storage Instructions Aliquot and store at -20°C. Minimize freezing and thawing.

Synonym / Alias Names asporin proteoglycan|OS3|asporin|periodontal ligament associated protein 1|small leucine-rich protein 1C|asporin (LRR class 1)|FLJ20129|SLRR1C|PLAP1|ASPN

Usage Immunofluorescence: Strong expression of the protein seen in the cytoplasm of HeLa cells.

Summary Recommended concentration: 10µg/ml.

Accession ID NP_060150.4

Blocking Peptide EBP06670

Immunogen Peptide with sequence C-IHENKVKKIQKDT, from the internal region of the protein sequence according to NP_060150.4.

Peptide Sequence	C-IHENKVKKIQKDT
Purification Method	Purified from goat serum by ammonium sulphate precipitation followed by antigen affinity chromatography using the immunizing peptide.
Shipping Instructions	Refrigerated
Predicted Species	Human, Mouse, Rat
Reactive Species	Human, Mouse, Rat
Human Gene ID	54829
Product Grade	https://prod-vector-labs-pimcore-assets.s3.us-east-1.amazonaws.com/assets/products/image/elite_medium.png
ELISA Detection Limit	Antibody detection limit dilution 1:64000.
Western Blot	Approx 40kDa band observed in Human Tonsil and Uterus and in Mouse and Rat Skeletal Muscle lysates (calculated MW of 43.3kDa according to Human NP_060150.4, and 42.6kDa according to Mouse NP_001165952.1 and Rat NP_001014030.1). Recommended concentration: 0.1-1µg/ml. Primary incubation 1 hour at room temperature. Negative Control: Human Cerebellum lysate.
Application Type	Pep-ELISA, WB, IF

DOCUMENTS

- [Data Sheet](#)

GALLERY IMAGES

