



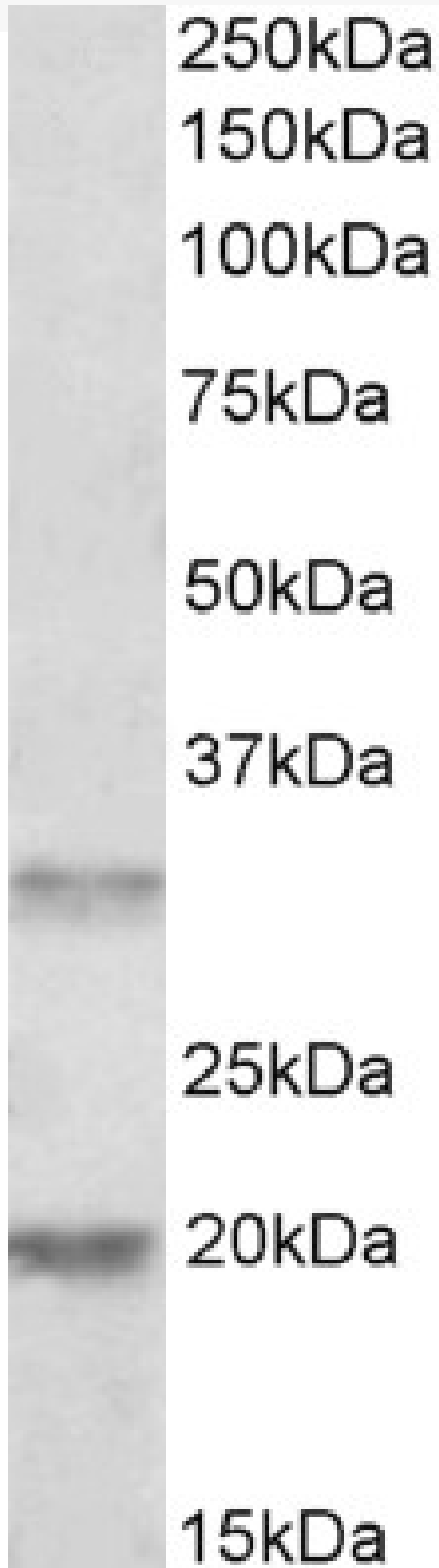
www.everestbiotech.com

Email: customerservice@vectorlabs.com

Telephone: [\(650\) 697-3600](tel:(650)697-3600)

GOAT ANTI-ASRGL1 / ALP ANTIBODY

SKU: EB08138





SPECIFICATIONS

Formulation	Supplied at 0.5 mg/ml in Tris saline, 0.02% sodium azide, pH7.3 with 0.5% bovine serum albumin.
Unit Size	100 µg
Storage Instructions	Aliquot and store at -20°C. Minimize freezing and thawing.
Synonym / Alias Names	asparaginase-like 1 protein FLJ22316 ALP1 asparaginase like 1 ALP ASRGL1
Accession ID	NP_001077395.1; NP_079356.3
Blocking Peptide	EBP08138
Immunogen	Peptide with sequence EKHEKGAQKTDCQ, from the internal region of the protein sequence according to NP_001077395.1; NP_079356.3.
Product Comments	Both reported variants represent identical protein (NP_001077395.1 and NP_079356.3).
Peptide Sequence	EKHEKGAQKTDCQ
Purification Method	Purified from goat serum by ammonium sulphate precipitation followed by antigen affinity chromatography using the immunizing peptide.
Shipping Instructions	Refrigerated
Predicted Species	Human
Reactive Species	Human
Human Gene ID	80150
Product Grade	https://prod-vector-labs-pimcore-assets.s3.us-east-1.amazonaws.com/assets/products/image/elite_medium.png
ELISA Detection Limit	Antibody detection limit dilution 1:32000.
Western Blot	Approx 34kDa band observed in Human Tosil and lysteof cell line Hela lysates (calculated MW of 32.1kDa according to NP_001077395.1). Recommended concentration: 1-3µg/ml. An additional band of unknown identity was also consistently observed at 20kDa. This band was successfully blocked by incubation with the immunizing peptide.
Application Type	Pep-ELISA, WB



www.everestbiotech.com

Email: customerservice@vectorlabs.com

Telephone: [\(650\) 697-3600](tel:(650)697-3600)

DOCUMENTS

- [Data Sheet](#)

GALLERY IMAGES

