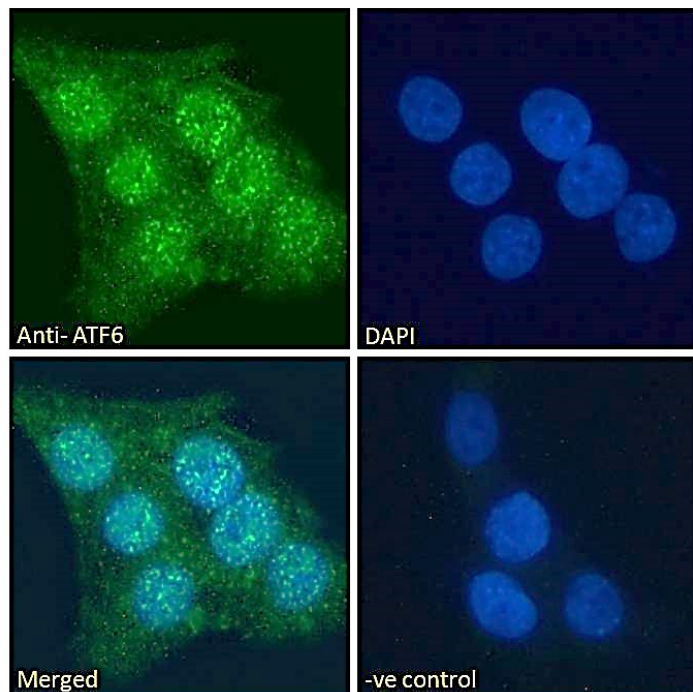


GOAT ANTI-ATF6 (AA437-449) ANTIBODY

SKU: EB12080



SPECIFICATIONS

Formulation Supplied at 0.5 mg/ml in Tris saline, 0.02% sodium azide, pH7.3 with 0.5% bovine serum albumin.

Unit Size 100 µg

Storage Instructions Aliquot and store at -20°C. Minimize freezing and thawing.

Synonym / Alias Names cyclic AMP-dependent transcription factor ATF-6 alpha|cAMP-dependent transcription factor ATF-6 alpha|ATF6A|activating transcription factor 6|ATF6

Usage Summary **Immunofluorescence:** Strong expression of the protein seen in the cytoplasm of A431 and HeLa cells. Recommended concentration: 10µg/ml. **Flow Cytometry:** Flow cytometric analysis of A431 cells. Recommended concentration: 10ug/ml.

Accession ID NP_031374.2

Blocking Peptide EBP12080

Immunogen Peptide with sequence C-NSYRYDHSVSNKD, from the internal region of the protein sequence according to NP_031374.2.

Peptide Sequence	C-NSYRYDHSVSN DK
Purification Method	Purified from goat serum by ammonium sulphate precipitation followed by antigen affinity chromatography using the immunizing peptide.
Shipping Instructions	Refrigerated
Predicted Species	Human, Rat, Dog, Pig, Cow
Reactive Species	Human
Human Gene ID	22926
Rat Gene ID	304962
Product Grade	https://prod-vector-labs-pimcore-assets.s3.us-east-1.amazonaws.com/assets/products/image/elite_plus_medium.png
ELISA Detection Limit	Antibody detection limit dilution 1:128000.
Western Blot	Approx 75-80kDa band observed in lysates of cell lines HeLa and MCF7, and in HeLa and Jurkat nuclear cell lysates (calculated MW of 74.6kDa according to NP_031374.2). Recommended concentration: 0.3-2µg/ml. Primary incubation 1 hour at room temperature.
Application Type	Pep-ELISA, WB, IF, FC

DOCUMENTS

- [Data Sheet](#)

GALLERY IMAGES

