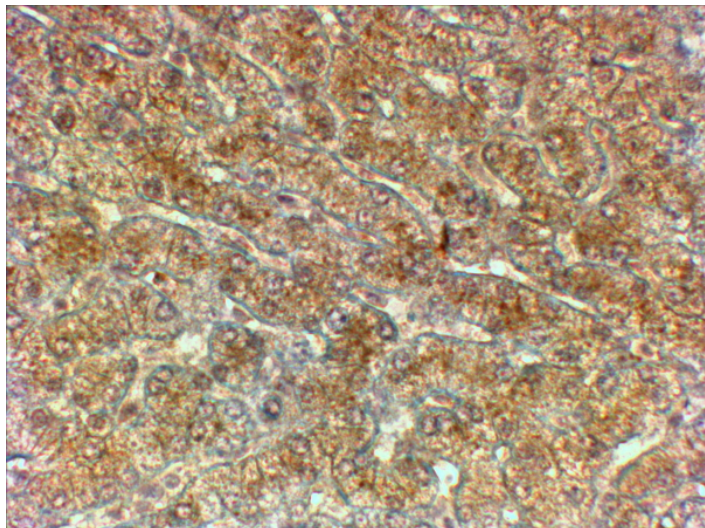


# GOAT ANTI-ATG4A ANTIBODY

**SKU:** EB08867



## SPECIFICATIONS

**Formulation** Supplied at 0.5 mg/ml in Tris saline, 0.02% sodium azide, pH7.3 with 0.5% bovine serum albumin.

**Unit Size** 100 µg

**Storage Instructions** Aliquot and store at -20°C. Minimize freezing and thawing.

**Synonym / Alias** ATG4A|ATG4 autophagy related 4 homolog A (S. cerevisiae)|APG4A|AUTL2|APG4 autophagy 4 homolog A|AUT-like 2, cysteine endopeptidase|OTTHUMP00000062893|autophagin 2|autophagy-related cysteine endopeptidase 2

**Accession ID** NP\_443168.2; NP\_840054.1

**Blocking Peptide** EBP08867

**Immunogen** Peptide with sequence TEENGTVNDQTFHC, from the internal region of the protein sequence according to NP\_443168.2; NP\_840054.1.

**Product Comments** This antibody is expected to recognize both reported isoforms (NP\_443168.2; NP\_840054.1)

**Peptide Sequence** TEENGTVNDQTFHC

**Purification Method** Purified from goat serum by ammonium sulphate precipitation followed by antigen affinity chromatography using the immunizing peptide.

|                              |   |
|------------------------------|---|
| <b>Shipping Instructions</b> | Refrigerated  |
| <b>Predicted Species</b>     | Human   |
| <b>Reactive Species</b>      | Human   |
| <b>Human Gene ID</b>         | 115201  |
| <b>Product Grade</b>         | <a href="https://prod-vector-labs-pimcore-assets.s3.us-east-1.amazonaws.com/assets/products/image/elite_medium.png">https://prod-vector-labs-pimcore-assets.s3.us-east-1.amazonaws.com/assets/products/image/elite_medium.png</a> |
| <b>IHC Results</b>           | In paraffin embedded Human Liver shows textured cytoplasm staining in the hepatocytes. Recommended concentration, 2-4µg/ml.   |
| <b>ELISA</b>                 |   |
| <b>Detection Limit</b>       | Antibody detection limit dilution 1:1000.   |
| <b>Application Type</b>      | Pep-ELISA, IHC  |

## DOCUMENTS

- [Data Sheet](#)

## GALLERY IMAGES

