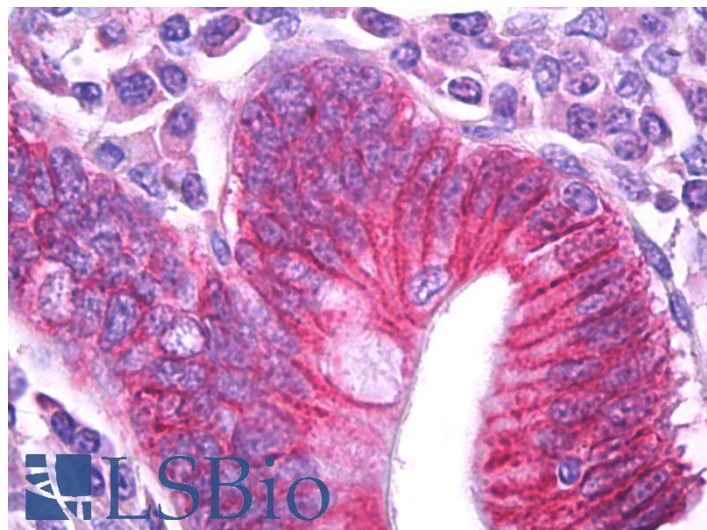


GOAT ANTI-ATP1B1 ANTIBODY

SKU: EB09640



SPECIFICATIONS

Formulation Supplied at 0.5 mg/ml in Tris saline, 0.02% sodium azide, pH7.3 with 0.5% bovine serum albumin.

Unit Size 100 µg

Storage Instructions Aliquot and store at -20°C. Minimize freezing and thawing.

Synonym / Alias Names sodium/potassium-transporting ATPase beta-1 chain|sodium/potassium-dependent ATPase beta-1 subunit|adenosinetriphosphatase|OTTHUMP00000032538|OTTHUMP00000032537|Na, K-ATPase beta 1 subunit|Na, K-ATPase beta-1 polypeptide|Na⁺/K⁺ -ATPase beta 1 subunit|Beta 1-subunit of Na(+), K(+)-ATPase|MGC1798|ATP1B|ATPase, Na⁺/K⁺ transporting, beta 1 polypeptide|ATP1B1

Accession ID NP_001668.1; NP_001001787.1

Blocking Peptide EBP09640

Immunogen Peptide with sequence C-KTEISFRPNPKSYE, from the internal region of the protein sequence according to NP_001668.1; NP_001001787.1.

Product Comments This antibody is expected to recognize both reported isoforms (NP_001668.1; NP_001001787.1).

Peptide Sequence C-KTEISFRPNPKSYE

Purification Method Purified from goat serum by ammonium sulphate precipitation followed by antigen affinity chromatography using the immunizing peptide.

| | |
|------------------------------|---|
| Shipping Instructions | Refrigerated |
| Predicted Species | Human, Mouse, Rat, Dog, Cow, Pig |
| Reactive Species | Human, Mouse, Rat |
| Human Gene ID | 481 |
| Product Grade | https://prod-vector-labs-pimcore-assets.s3.us-east-1.amazonaws.com/assets/products/image/elite_medium.png |
| IHC Results | Paraffin embedded Human Small Intestine. Recommended concentration: 5µg/ml. |
| ELISA | |
| Detection Limit | Antibody detection limit dilution 1:128000. |
| Western Blot | Approx 48kDa band observed in Rat Retina lysates and 50kDa in Mouse and Rat Kidney lysates (calculated MW of 35.1kDa according to Human NP_001668.1, 35.2kDa according to Mouse NP_033851.1 and Rat NP_037245.2). The observed molecular weight corresponds to the glycosylated form (PMID: 20130120). Recommended concentration: 0.1-0.3µg/ml. |
| Application Type | Pep-ELISA, WB, IHC |

DOCUMENTS

- [Data Sheet](#)

GALLERY IMAGES

