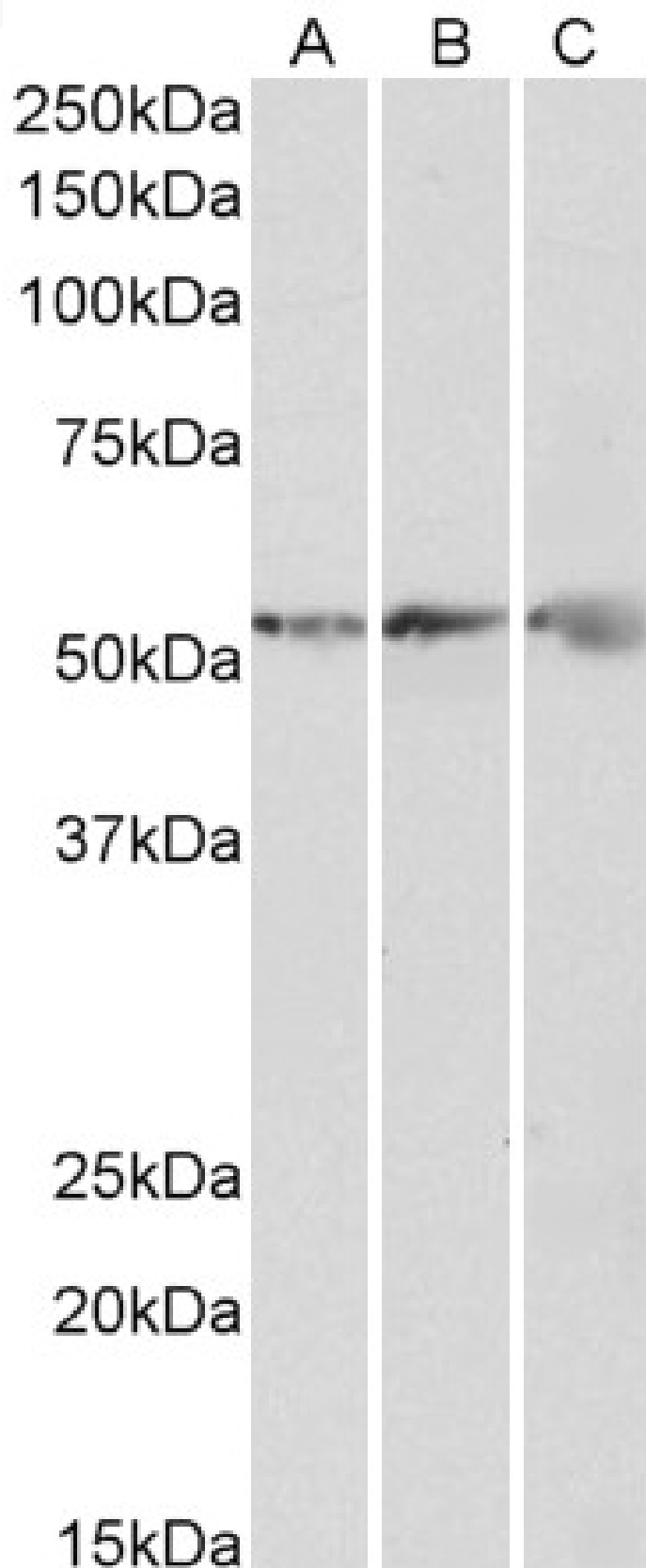


GOAT ANTI-ATP5B (AA15162) ANTIBODY

SKU: EB12459



SPECIFICATIONS

Formulation	Supplied at 0.5 mg/ml in Tris saline, 0.02% sodium azide, pH7.3 with 0.5% bovine serum albumin.
Unit Size	100 µg
Storage Instructions	Aliquot and store at -20°C. Minimize freezing and thawing.
Synonym / Alias Names	mitochondrial ATP synthetase, beta subunit mitochondrial ATP synthase beta subunit ATP synthase subunit beta, mitochondrial ATPSB ATPMB ATP synthase, H ⁺ transporting, mitochondrial F1 complex, beta polypeptide ATP5B
Accession ID	NP_001677.2
Blocking Peptide	EBP12459
Immunogen	Peptide with sequence C-EPIDERGPIKTKQ, from the internal region of the protein sequence according to NP_001677.2.
Peptide Sequence	C-EPIDERGPIKTKQ
Purification Method	Purified from goat serum by ammonium sulphate precipitation followed by antigen affinity chromatography using the immunizing peptide.
Shipping Instructions	Refrigerated
Predicted Species	Human, Mouse, Rat, Dog, Pig, Cow
Reactive Species	Human, Mouse, Rat, Pig
Human Gene ID	506
Mouse Gene ID	11947
Rat Gene ID	171374
Product Grade	https://prod-vector-labs-pimcore-assets.s3.us-east-1.amazonaws.com/assets/products/image/elite_medium.png
ELISA Detection Limit	Antibody detection limit dilution 1:4000.
Western Blot	Approx 55kDa band observed in Human, Mouse, Rat and Pig Heart lysates (calculated MW of 56.6kDa according to NP_001677.2). Recommended concentration: 0.3-1µg/ml.
Application Type	Pep-ELISA, WB

DOCUMENTS

- [Data Sheet](#)

GALLERY IMAGES

