

# GOAT ANTI-ATP5C1 (AA27-40) ANTIBODY

**SKU:** EB12460

250kDa

150kDa

100kDa

75kDa

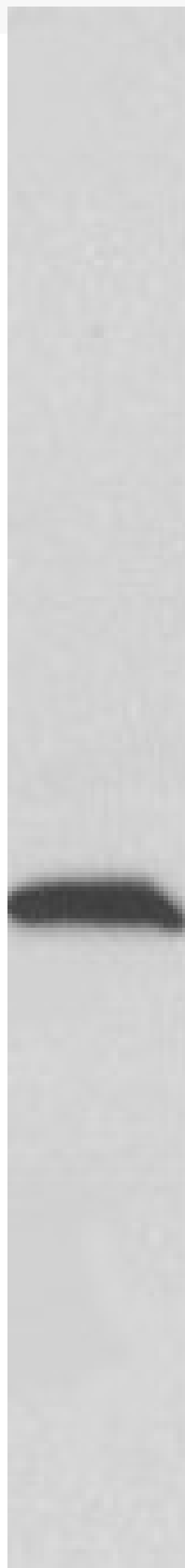
50kDa

37kDa

25kDa

20kDa

15kDa



## SPECIFICATIONS

**Formulation** Supplied at 0.5 mg/ml in Tris saline, 0.02% sodium azide, pH7.3 with 0.5% bovine serum albumin.

**Unit Size** 100 µg

**Storage Instructions** Aliquot and store at -20°C. Minimize freezing and thawing.

**Synonym / Alias Names** mitochondrial ATP synthase, gamma subunit 1|F-ATPase gamma subunit|ATP synthase subunit gamma, mitochondrial|ATP synthase gamma chain, mitochondrial|ATP5CL1|ATP5C|ATP synthase, H<sup>+</sup> transporting, mitochondrial F1 complex, gamma polypeptide 1|ATP5C1

**Accession ID** NP\_005165.1; NP\_001001973.1

**Blocking Peptide** EBP12460

**Immunogen** Peptide with sequence C-TLKDITRRLKSIKN, from the internal region (near N terminus) of the protein sequence according to NP\_005165.1; NP\_001001973.1.

**Product Comments** The immunizing peptide represents the N terminus of the mature protein. This antibody is expected to recognize both reported isoforms (NP\_005165.1; NP\_001001973.1).

**Peptide Sequence** C-TLKDITRRLKSIKN

**Purification Method** Purified from goat serum by ammonium sulphate precipitation followed by antigen affinity chromatography using the immunizing peptide.

**Shipping Instructions** Refrigerated

**Predicted Species** Human, Mouse, Rat, Dog, Cow

**Reactive Species** Rat

**Human Gene ID** 509

**Mouse Gene ID** 11949

**Rat Gene ID** 116550

**Product Grade** [https://prod-vector-labs-pimcore-assets.s3.us-east-1.amazonaws.com/assets/products/image/elite\\_medium.png](https://prod-vector-labs-pimcore-assets.s3.us-east-1.amazonaws.com/assets/products/image/elite_medium.png)

**ELISA Detection Limit** Antibody detection limit dilution 1:128000.

**Western Blot** Approx 30kDa band observed in Rat Skeletal Muscle lysates (calculated MW of 33.0kDa according to Rat NP\_446277.1). Recommended concentration: 0.1-0.3µg/ml.

**Application Type** Pep-ELISA, WB

## DOCUMENTS

- [Data Sheet](#)

## GALLERY IMAGES

